



# ICAM-2 Monoclonal Antibody

<b>Catalog No</b>	BYmab-17025
<b>Isotype</b>	IgG
<b>Reactivity</b>	Human;Rat;Mouse;
<b>Applications</b>	WB
<b>Gene Name</b>	ICAM2
<b>Protein Name</b>	Intercellular adhesion molecule 2
<b>Immunogen</b>	The antiserum was produced against synthesized peptide derived from human ICAM2. AA range:151-200
<b>Specificity</b>	ICAM-2 Monoclonal Antibody detects endogenous levels of ICAM-2 protein.
<b>Formulation</b>	Liquid in PBS containing 50% glycerol, 0.5% BSA and 0.02% sodium azide.
<b>Source</b>	Monoclonal, Mouse,IgG
<b>Purification</b>	The antibody was affinity-purified from mouse antiserum by affinity-chromatography using epitope-specific immunogen.
<b>Dilution</b>	WB 1:500-2000
<b>Concentration</b>	1 mg/ml
<b>Purity</b>	≥90%
<b>Storage Stability</b>	-20°C/1 year
<b>Synonyms</b>	ICAM2; Intercellular adhesion molecule 2; ICAM-2; CD antigen CD102
<b>Observed Band</b>	30kD
<b>Cell Pathway</b>	Membrane ; Single-pass type I membrane protein . Cell projection, microvillus . Co-localizes with RDX, EZR and MSN in microvilli. .
<b>Tissue Specificity</b>	Aorta endothelial cell,Blood,Brain,Endothelial cell,Plasma,Spleen,
<b>Function</b>	function:ICAM proteins are ligands for the leukocyte adhesion protein LFA-1 (integrin alpha-L/beta-2). ICAM2 may play a role in lymphocyte recirculation by blocking LFA-1-dependent cell adhesion. It mediates adhesive interactions important for antigen-specific immune response, NK-cell mediated clearance, lymphocyte recirculation, and other cellular interactions important for immune response and surveillance.,online information:ICAM-2,similarity:Belongs to the immunoglobulin superfamily. ICAM family.,similarity:Contains 2 Ig-like C2-type (immunoglobulin-like) domains.,
<b>Background</b>	The protein encoded by this gene is a member of the intercellular adhesion molecule (ICAM) family. All ICAM proteins are type I transmembrane

**Nanjing BYabscience technology Co.,Ltd**



glycoproteins, contain 2-9 immunoglobulin-like C2-type domains, and bind to the leukocyte adhesion LFA-1 protein. This protein may play a role in lymphocyte recirculation by blocking LFA-1-dependent cell adhesion. It mediates adhesive interactions important for antigen-specific immune response, NK-cell mediated clearance, lymphocyte recirculation, and other cellular interactions important for immune response and surveillance. Several transcript variants encoding the same protein have been found for this gene. [provided by RefSeq, Jul 2008],

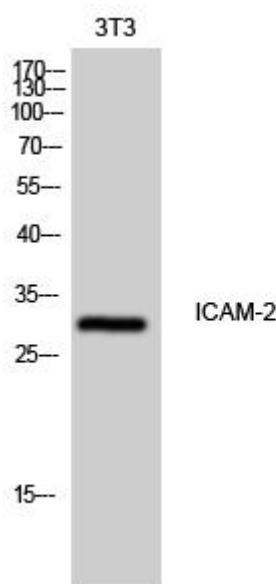
**matters needing attention**

Avoid repeated freezing and thawing!

**Usage suggestions**

This product can be used in immunological reaction related experiments. For more information, please consult technical personnel.

## Products Images



Western Blot analysis of various cells using ICAM-2 Monoclonal Antibody

**Nanjing BYabs science technology Co.,Ltd**

网址: [www.njbybio.com](http://www.njbybio.com)

官方热线: 025-5229-8998

监督电话: 15950492658