



Cleaved-Integrin α 7 LC (E959) Monoclonal Antibody

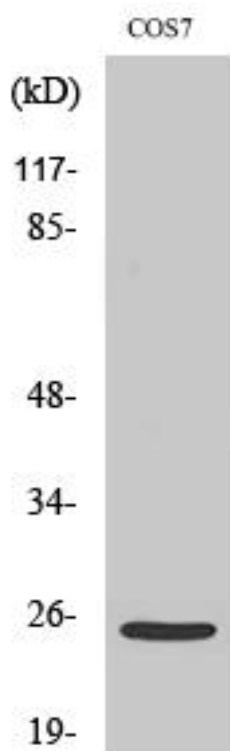
Catalog No	BYmab-16807
Isotype	IgG
Reactivity	Human;Monkey
Applications	WB
Gene Name	ITGA7
Protein Name	Integrin alpha-7
Immunogen	The antiserum was produced against synthesized peptide derived from human ITGA7. AA range:940-989
Specificity	Cleaved-Integrin α 7 LC (E959) Monoclonal Antibody detects endogenous levels of fragment of activated Integrin α 7 LC protein resulting from cleavage adjacent to E959.
Formulation	Liquid in PBS containing 50% glycerol, 0.5% BSA and 0.02% sodium azide.
Source	Monoclonal, Mouse,IgG
Purification	The antibody was affinity-purified from mouse antiserum by affinity-chromatography using epitope-specific immunogen.
Dilution	WB 1:500-2000
Concentration	1 mg/ml
Purity	$\geq 90\%$
Storage Stability	-20°C/1 year
Synonyms	ITGA7; Integrin alpha-7
Observed Band	25kD
Cell Pathway	Membrane; Single-pass type I membrane protein.
Tissue Specificity	Isoforms containing segment A are predominantly expressed in skeletal muscle. Isoforms containing segment B are abundantly expressed in skeletal muscle, moderately in cardiac muscle, small intestine, colon, ovary and prostate and weakly in lung and testes. Isoforms containing segment X2D are expressed at low levels in fetal and adult skeletal muscle and in cardiac muscle, but are not detected in myoblasts and myotubes. In muscle fibers isoforms containing segment A and B are expressed at myotendinous and neuromuscular junctions; isoforms containing segment C are expressed at neuromuscular junctions and at extrasynaptic sites. Isoforms containing segments X1 or X2 or, at low levels, X1X2 are expressed in fetal and adult skeletal muscle (myoblasts and myotubes) and cardiac muscle.

Nanjing BYabscience technology Co.,Ltd



Function	alternative products:Additional isoforms seem to exist. There is a combination of at least five alternatively spliced domains, three extracellular (X1, X2 and D) and two cytoplasmic (A and B). A third potential alternatively spliced cytoplasmic domain (C) does not appear to be expressed. In vitro generated isoform X2C shows function. So far detected are isoform Alpha-7X1A, isoform Alpha-7X2B (major), isoform Alpha-7X2DB (minor) and minor isoforms containing segment X1X2. Experimental confirmation may be lacking for some isoforms.developmental stage:In renewing intestinal epithelium, expression of isoforms containing segment B correlates with the onset of enterocytic differentiation.,disease:Defects in ITGA7 are associated with a form of congenital myopathy; a group of heterogeneous muscle disorders which are thought to result from abnormal muscle development. Muscle weakness is either no
Background	integrin subunit alpha 7(ITGA7) Homo sapiens The protein encoded by this gene belongs to the integrin alpha chain family. Integrins are heterodimeric integral membrane proteins composed of an alpha chain and a beta chain. They mediate a wide spectrum of cell-cell and cell-matrix interactions, and thus play a role in cell migration, morphologic development, differentiation, and metastasis. This protein functions as a receptor for the basement membrane protein laminin-1. It is mainly expressed in skeletal and cardiac muscles and may be involved in differentiation and migration processes during myogenesis. Defects in this gene are associated with congenital myopathy. Alternatively spliced transcript variants encoding different isoforms have been noted for this gene. [provided by RefSeq, Feb 2009],
matters needing attention	Avoid repeated freezing and thawing!
Usage suggestions	This product can be used in immunological reaction related experiments. For more information, please consult technical personnel.

Products Images



Western Blot analysis of various cells using
Cleaved-Integrin α 7 LC (E959) Monoclonal Antibody

Nanjing BYabscience technology Co.,Ltd