



NHE-7 Monoclonal Antibody

Catalog No	BYmab-16483
Isotype	IgG
Reactivity	Human;Mouse;Rat
Applications	WB
Gene Name	SLC9A7
Protein Name	Sodium/hydrogen exchanger 7
Immunogen	The antiserum was produced against synthesized peptide derived from human SLC9A7. AA range:531-580
Specificity	NHE-7 Monoclonal Antibody detects endogenous levels of NHE-7 protein.
Formulation	Liquid in PBS containing 50% glycerol, 0.5% BSA and 0.02% sodium azide.
Source	Monoclonal, Mouse,IgG
Purification	The antibody was affinity-purified from mouse antiserum by affinity-chromatography using epitope-specific immunogen.
Dilution	WB 1:500-2000
Concentration	1 mg/ml
Purity	≥90%
Storage Stability	-20°C/1 year
Synonyms	SLC9A7; NHE7; Sodium/hydrogen exchanger 7; Na(+)/H(+) exchanger 7; NHE-7; Solute carrier family 9 member 7
Observed Band	80kD
Cell Pathway	Golgi apparatus, trans-Golgi network membrane ; Multi-pass membrane protein . Recycling endosome membrane ; Multi-pass membrane protein . Cell membrane ; Multi-pass membrane protein .
Tissue Specificity	Ubiquitously expressed.
Function	function:Mediates electroneutral exchange of protons for Na(+) and K(+) across endomembranes. May contribute to Golgi volume and cation homeostasis.,miscellaneous:Is not inhibited by amiloride but by benzamil and quinine.,similarity:Belongs to the monovalent cation:proton antiporter 1 (CPA1) transporter (TC 2.A.36) family.,subunit:Interacts with SCAMP1, SCAMP2 and SCAMP5; may participate in its shuttling from trans-Golgi network to recycling endosomes.,tissue specificity:Ubiquitously expressed.,

Nanjing BYabscience technology Co.,Ltd

网址: www.njbybio.com

官方热线: 025-5229-8998

监督电话: 15950492658



Background

This gene encodes a sodium and potassium/ proton antiporter that is a member of the solute carrier family 9 protein family. The encoded protein is primarily localized to the trans-Golgi network and is involved in maintaining pH homeostasis in organelles along the secretory and endocytic pathways. This protein may enhance cell growth of certain breast tumors. This gene is part of a gene cluster on chromosome Xp11.23. A pseudogene of this gene is found on chromosome 12. Alternate splicing results in multiple transcript variants. [provided by RefSeq, Mar 2012],

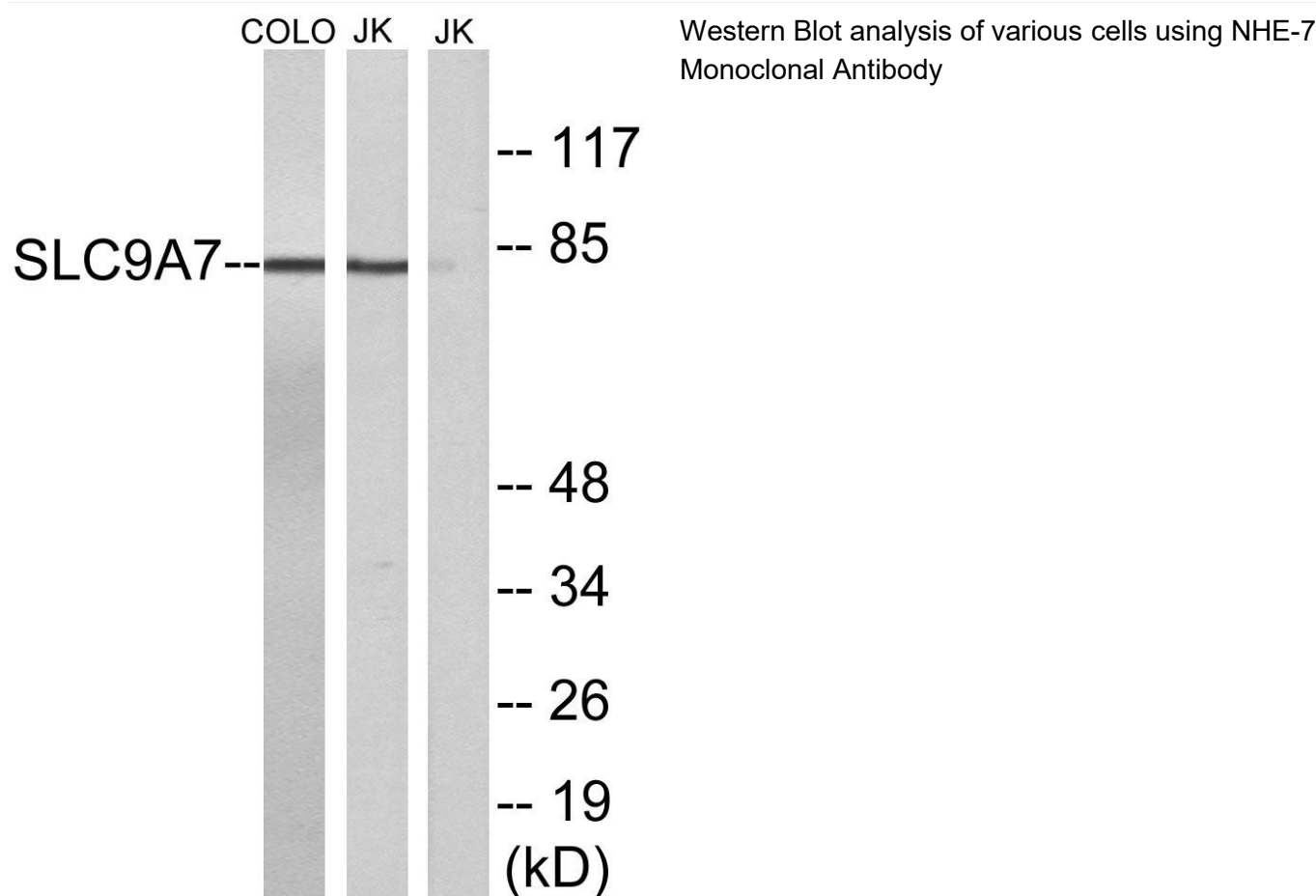
matters needing attention

Avoid repeated freezing and thawing!

Usage suggestions

This product can be used in immunological reaction related experiments. For more information, please consult technical personnel.

Products Images



Nanjing BYabs science technology Co.,Ltd

网址: www.njbybio.com

官方热线: 025-5229-8998

监督电话: 15950492658