



GABA A Receptor γ 2 Monoclonal Antibody

Catalog No	BYmab-16320
Isotype	IgG
Reactivity	Human;Rat;Mouse
Applications	WB
Gene Name	GABRG2
Protein Name	Gamma-aminobutyric acid receptor subunit gamma-2 (GABA(A) receptor subunit gamma-2)
Immunogen	Synthetic Peptide of GABA A Receptor γ 2
Specificity	GABA A Receptor γ 2 protein(A229) detects endogenous levels of GABA A Receptor γ 2
Formulation	Liquid in PBS containing 50% glycerol, 0.5% BSA and 0.02% sodium azide.
Source	Monoclonal, Mouse,IgG
Purification	The antibody was affinity-purified from mouse antiserum by affinity-chromatography using epitope-specific immunogen.
Dilution	WB 1:500-2000
Concentration	1 mg/ml
Purity	$\geq 90\%$
Storage Stability	-20°C/1 year
Synonyms	Gamma-aminobutyric acid receptor subunit gamma-2 (GABA(A) receptor subunit gamma-2)
Observed Band	55kD
Cell Pathway	Cell junction, synapse, postsynaptic cell membrane ; Multi-pass membrane protein . Cell membrane ; Multi-pass membrane protein . Cell projection, dendrite . Cytoplasmic vesicle membrane .
Tissue Specificity	Brain,
Function	disease:Defects in GABRG2 are a cause of severe myoclonic epilepsy in infancy (SMEI) [MIM:607208]; also called Dravet syndrome. SMEI is a rare disorder characterized by generalized tonic, clonic, and tonic-clonic seizures that are initially induced by fever and begin during the first year of life. Later, patients also manifest other seizure types, including absence, myoclonic, and simple and complex partial seizures. Psychomotor development delay is observed around the second year of life. SMEI is considered to be the most severe phenotype within the spectrum of generalized epilepsies with febrile seizures-plus.,disease:Defects in GABRG2 are the cause of childhood absence epilepsy type 2 (ECA2)

Nanjing BYabscience technology Co.,Ltd



[MIM:607681]. ECA2 is a subtype of idiopathic generalized epilepsy (IGE) characterized by an onset at age 6-7 years, frequent absence seizures (several per day) and bilateral, synchronous, symmetr

Background

This gene encodes a gamma-aminobutyric acid (GABA) receptor. GABA is the major inhibitory neurotransmitter in the mammalian brain, where it acts at GABA-A receptors, which are ligand-gated chloride channels. GABA-A receptors are pentameric, consisting of proteins from several subunit classes: alpha, beta, gamma, delta and rho. Mutations in this gene have been associated with epilepsy and febrile seizures. Multiple transcript variants encoding different isoforms have been identified for this gene. [provided by RefSeq, Jul 2008],

matters needing attention

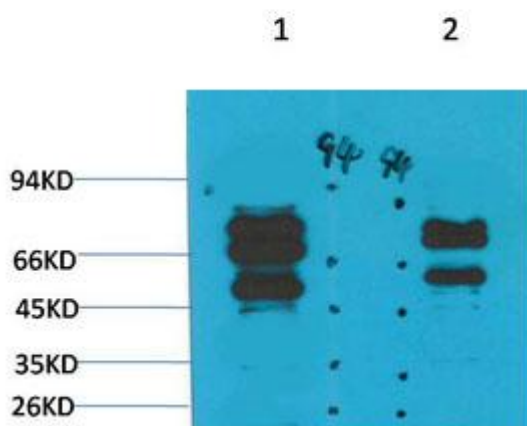
Avoid repeated freezing and thawing!

Usage suggestions

This product can be used in immunological reaction related experiments. For more information, please consult technical personnel.

Products Images

Western Blot analysis of various cells using GABA A Receptor γ 2 Monoclonal Antibody



Nanjing BYabscience technology Co.,Ltd

网址: www.njbybio.com

官方热线: 025-5229-8998

监督电话: 15950492658