



# AS250 Monoclonal Antibody

Catalog No	BYmab-16142
Isotype	IgG
Reactivity	Human;Mouse
Applications	WB
Gene Name	RALGAPA2
Protein Name	Ral GTPase-activating protein subunit alpha-2
Immunogen	The antiserum was produced against synthesized peptide derived from human AS250. AA range:641-690
Specificity	AS250 Monoclonal Antibody detects endogenous levels of AS250 protein.
Formulation	Liquid in PBS containing 50% glycerol, 0.5% BSA and 0.02% sodium azide.
Source	Monoclonal, Mouse,IgG
Purification	The antibody was affinity-purified from mouse antiserum by affinity-chromatography using epitope-specific immunogen.
Dilution	WB 1:500-2000
Concentration	1 mg/ml
Purity	≥90%
Storage Stability	-20°C/1 year
Synonyms	RALGAPA2; C20orf74; KIAA1272; Ral GTPase-activating protein subunit alpha-2; 250 kDa substrate of Akt; AS250; p220
Observed Band	210kD
Cell Pathway	Cytoplasm .
Tissue Specificity	
Function	regulation of small GTPase mediated signal transduction,
Background	RALGAPA2 (Ral GTPase Activating Protein Catalytic Alpha Subunit 2) is a Protein Coding gene. Among its related pathways are Vesicle-mediated transport and Translocation of GLUT4 to the plasma membrane. GO annotations related to this gene include protein heterodimerization activity and GTPase activator activity. An important paralog of this gene is RAP1GAP.
matters needing attention	Avoid repeated freezing and thawing!

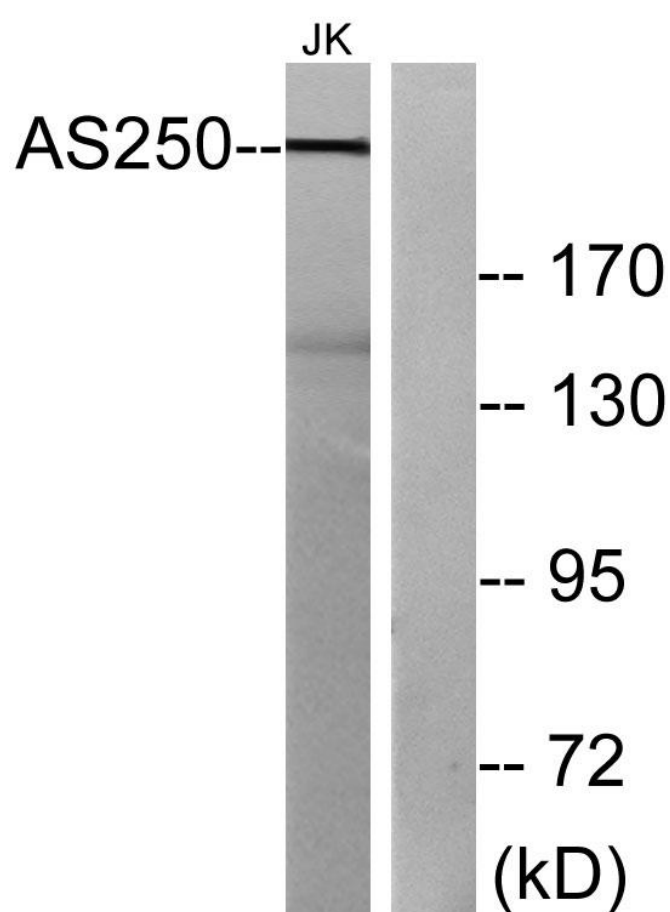
Nanjing BYabscience technology Co.,Ltd



### Usage suggestions

This product can be used in immunological reaction related experiments. For more information, please consult technical personnel.

## Products Images



Western Blot analysis of various cells using AS250 Monoclonal Antibody

Nanjing BYabs science technology Co.,Ltd

网址: [www.njbybio.com](http://www.njbybio.com)

官方热线: 025-5229-8998

监督电话: 15950492658