



Msx-2 Monoclonal Antibody

Catalog No	BYmab-15779
Isotype	IgG
Reactivity	Human;Mouse
Applications	WB
Gene Name	MSX2
Protein Name	Homeobox protein MSX-2
Immunogen	Synthesized peptide derived from the Internal region of human Msx-2.
Specificity	Msx-2 Monoclonal Antibody detects endogenous levels of Msx-2 protein.
Formulation	Liquid in PBS containing 50% glycerol, 0.5% BSA and 0.02% sodium azide.
Source	Monoclonal, Mouse,IgG
Purification	The antibody was affinity-purified from mouse antiserum by affinity-chromatography using epitope-specific immunogen.
Dilution	WB 1:500-2000
Concentration	1 mg/ml
Purity	≥90%
Storage Stability	-20°C/1 year
Synonyms	MSX2; HOX8; Homeobox protein MSX-2; Homeobox protein Hox-8
Observed Band	28kD
Cell Pathway	Nucleus.
Tissue Specificity	Osteoblast,Pancreas,Tooth,
Function	disease:Defects in MSX2 are the cause of craniosynostosis type 2 (CRS2) [MIM:604757]; also known as craniosynostosis Boston-type (CSB). CRS2 is an autosomal dominant disorder characterized by the premature fusion of calvarial sutures. The craniosynostosis phenotype is either fronto-orbital recession, or frontal bossing, or turribrachycephaly, or cloverleaf skull. Associated features include severe headache, high incidence of visual problems (myopia or hyperopia), and short first metatarsals. Intelligence is normal.,disease:Defects in MSX2 are the cause of parietal foramina 1 (PFM1) [MIM:168500]; also known as foramina parietalia permagna (FPP). PFM1 is an autosomal dominant disease characterized by oval defects of the parietal bones caused by deficient ossification around the parietal notch, which is normally obliterated during the fifth fetal month.,disease:Defects in MSX2 are the cause

Nanjing BYabscience technology Co.,Ltd



Background

This gene encodes a member of the muscle segment homeobox gene family. The encoded protein is a transcriptional repressor whose normal activity may establish a balance between survival and apoptosis of neural crest-derived cells required for proper craniofacial morphogenesis. The encoded protein may also have a role in promoting cell growth under certain conditions and may be an important target for the RAS signaling pathways. Mutations in this gene are associated with parietal foramina 1 and craniosynostosis type 2. [provided by RefSeq, Jul 2008],

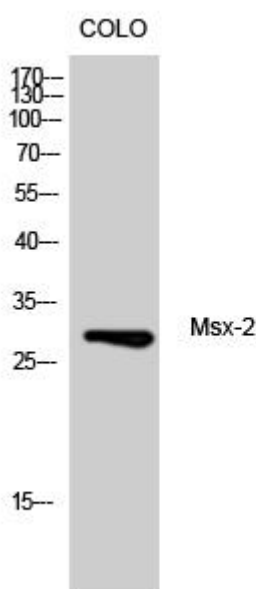
matters needing attention

Avoid repeated freezing and thawing!

Usage suggestions

This product can be used in immunological reaction related experiments. For more information, please consult technical personnel.

Products Images



Western Blot analysis of various cells using Msx-2 Monoclonal Antibody