



Emx1 Monoclonal Antibody

Catalog No	BYmab-15755
Isotype	IgG
Reactivity	Human;Mouse;Rat
Applications	WB
Gene Name	EMX1
Protein Name	Homeobox protein EMX1
Immunogen	The antiserum was produced against synthesized peptide derived from human EMX1. AA range:181-230
Specificity	Emx1 Monoclonal Antibody detects endogenous levels of Emx1 protein.
Formulation	Liquid in PBS containing 50% glycerol, 0.5% BSA and 0.02% sodium azide.
Source	Monoclonal, Mouse,IgG
Purification	The antibody was affinity-purified from mouse antiserum by affinity-chromatography using epitope-specific immunogen.
Dilution	WB 1:500-2000
Concentration	1 mg/ml
Purity	≥90%
Storage Stability	-20°C/1 year
Synonyms	EMX1; Homeobox protein EMX1; Empty spiracles homolog 1; Empty spiracles-like protein 1
Observed Band	28kD
Cell Pathway	Nucleus . Cytoplasm . Might be shuttling between the nucleus and the cytoplasm.
Tissue Specificity	Cerebral cortex.
Function	function:Transcription factor, which in cooperation with EMX2, acts to generate the boundary between the roof and archipallium in the developing brain. May function in combinations with OTX1/2 to specify cell fates in the developing central nervous system.,similarity:Belongs to the EMX homeobox family.,similarity:Contains 1 homeobox DNA-binding domain.,tissue specificity:Cerebral cortex.,
Background	function:Transcription factor, which in cooperation with EMX2, acts to generate the boundary between the roof and archipallium in the developing brain. May function in combinations with OTX1/2 to specify cell fates in the developing central nervous system.,similarity:Belongs to the EMX homeobox

Nanjing BYabscience technology Co.,Ltd



family.,similarity:Contains 1 homeobox DNA-binding domain.,tissue
specificity:Cerebral cortex.,

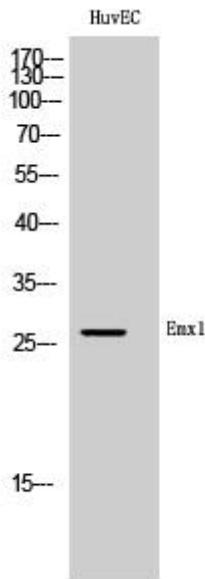
**matters needing
attention**

Avoid repeated freezing and thawing!

Usage suggestions

This product can be used in immunological reaction related experiments. For more information, please consult technical personnel.

Products Images



Western Blot analysis of various cells using Emx1
Monoclonal Antibody