



# Dlx-3 Monoclonal Antibody

<b>Catalog No</b>	BYmab-15752
<b>Isotype</b>	IgG
<b>Reactivity</b>	Human;Mouse
<b>Applications</b>	WB
<b>Gene Name</b>	DLX3
<b>Protein Name</b>	Homeobox protein DLX-3
<b>Immunogen</b>	The antiserum was produced against synthesized peptide derived from human DLX3. AA range:71-120
<b>Specificity</b>	Dlx-3 Monoclonal Antibody detects endogenous levels of Dlx-3 protein.
<b>Formulation</b>	Liquid in PBS containing 50% glycerol, 0.5% BSA and 0.02% sodium azide.
<b>Source</b>	Monoclonal, Mouse,IgG
<b>Purification</b>	The antibody was affinity-purified from mouse antiserum by affinity-chromatography using epitope-specific immunogen.
<b>Dilution</b>	WB 1:500-2000
<b>Concentration</b>	1 mg/ml
<b>Purity</b>	≥90%
<b>Storage Stability</b>	-20°C/1 year
<b>Synonyms</b>	DLX3; Homeobox protein DLX-3
<b>Observed Band</b>	45kD
<b>Cell Pathway</b>	Nucleus .
<b>Tissue Specificity</b>	Eye,Foreskin,Placenta,
<b>Function</b>	disease:Defects in DLX3 are a cause of trichodentoosseous syndrome (TDO) [MIM:190320]. TDO is an autosomal dominant syndrome characterized by enamel hypoplasia and hypocalcification with associated strikingly curly hair.,disease:Defects in DLX3 are the cause of amelogenesis imperfecta type 4 (AI4) [MIM:104510]; also known as amelogenesis imperfecta hypomaturation-hypoplastic type with taurodontism. AI4 is an autosomal dominant defect of enamel formation associated with enlarged pulp chambers.,function:Likely to play a regulatory role in the development of the ventral forebrain. May play a role in craniofacial patterning and morphogenesis.,similarity:Belongs to the distal-less homeobox family.,similarity:Contains 1 homeobox DNA-binding domain.,

**Nanjing BYabscience technology Co.,Ltd**



## Background

Many vertebrate homeo box-containing genes have been identified on the basis of their sequence similarity with Drosophila developmental genes. Members of the Dlx gene family contain a homeobox that is related to that of Distal-less (Dll), a gene expressed in the head and limbs of the developing fruit fly. The Distal-less (Dlx) family of genes comprises at least 6 different members, DLX1-DLX6. Trichodontoosseous syndrome (TDO), an autosomal dominant condition, has been correlated with DLX3 gene mutation. This gene is located in a tail-to-tail configuration with another member of the gene family on the long arm of chromosome 17. Mutations in this gene have been associated with the autosomal dominant conditions trichodontoosseous syndrome and amelogenesis imperfecta with taurodontism. [provided by RefSeq, Jul 2008],

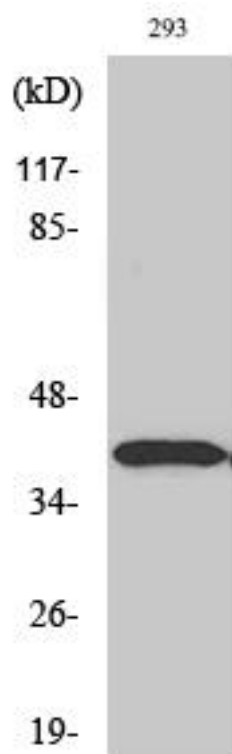
## matters needing attention

Avoid repeated freezing and thawing!

## Usage suggestions

This product can be used in immunological reaction related experiments. For more information, please consult technical personnel.

## Products Images



Western Blot analysis of various cells using Dlx-3 Monoclonal Antibody