



ALX3 Monoclonal Antibody

Catalog No	BYmab-15746
Isotype	IgG
Reactivity	Human;Mouse;Rat
Applications	WB
Gene Name	ALX3
Protein Name	Homeobox protein aristaless-like 3
Immunogen	The antiserum was produced against synthesized peptide derived from human ALX3. AA range:171-220
Specificity	ALX3 Monoclonal Antibody detects endogenous levels of ALX3 protein.
Formulation	Liquid in PBS containing 50% glycerol, 0.5% BSA and 0.02% sodium azide.
Source	Monoclonal, Mouse,IgG
Purification	The antibody was affinity-purified from mouse antiserum by affinity-chromatography using epitope-specific immunogen.
Dilution	WB 1:500-2000
Concentration	1 mg/ml
Purity	≥90%
Storage Stability	-20°C/1 year
Synonyms	ALX3; Homeobox protein aristaless-like 3; Proline-rich transcription factor ALX3
Observed Band	36kD
Cell Pathway	Nucleus .
Tissue Specificity	Brain,Neuroblastoma,
Function	function:Transcriptional regulator with a possible role in patterning of mesoderm during development.,similarity:Belongs to the paired homeobox family.,similarity:Contains 1 homeobox DNA-binding domain.,
Background	This gene encodes a nuclear protein with a homeobox DNA-binding domain that functions as a transcriptional regulator involved in cell-type differentiation and development. Preferential methylation of this gene's promoter is associated with advanced-stage neuroblastoma tumors. [provided by RefSeq, Jul 2008],
matters needing attention	Avoid repeated freezing and thawing!

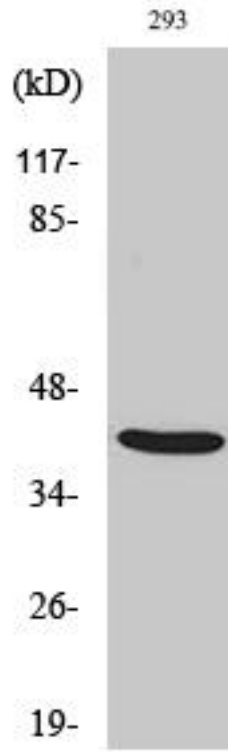
Nanjing BYabscience technology Co.,Ltd



Usage suggestions

This product can be used in immunological reaction related experiments. For more information, please consult technical personnel.

Products Images



Western Blot analysis of various cells using ALX3 Monoclonal Antibody

Nanjing BYabs science technology Co.,Ltd

网址: www.njbybio.com

官方热线: 025-5229-8998

监督电话: 15950492658