



SUDD Monoclonal Antibody

| | |
|---------------------------|---|
| Catalog No | BYmab-15008 |
| Isotype | IgG |
| Reactivity | Human;Mouse |
| Applications | WB |
| Gene Name | RIOK3 |
| Protein Name | Serine/threonine-protein kinase RIO3 |
| Immunogen | The antiserum was produced against synthesized peptide derived from human RIOK3. AA range:271-320 |
| Specificity | SUDD Monoclonal Antibody detects endogenous levels of SUDD protein. |
| Formulation | Liquid in PBS containing 50% glycerol, 0.5% BSA and 0.02% sodium azide. |
| Source | Monoclonal, Mouse,IgG |
| Purification | The antibody was affinity-purified from mouse antiserum by affinity-chromatography using epitope-specific immunogen. |
| Dilution | WB 1:500-2000 |
| Concentration | 1 mg/ml |
| Purity | ≥90% |
| Storage Stability | -20°C/1 year |
| Synonyms | RIOK3; SUDD; Serine/threonine-protein kinase RIO3; RIO kinase 3; sudD homolog |
| Observed Band | 59kD |
| Cell Pathway | Cytoplasm . |
| Tissue Specificity | Widely expressed. |
| Function | catalytic activity:ATP + a protein = ADP + a phosphoprotein.,similarity:Belongs to the protein kinase superfamily. RIO-type Ser/Thr kinase family.,similarity:Contains 1 protein kinase domain.,tissue specificity:Widely expressed., |
| Background | This gene was identified by the similarity of its product to the Aspergillus nidulans SUDD protein, an extragenic suppressor of the heat-sensitive bimD6 mutation that fails to attach properly to the spindle microtubules at a restrictive temperature. The specific function of this gene has not yet been determined. [provided by RefSeq, Jul 2008], |

Nanjing BYabscience technology Co.,Ltd

网址: www.njbybio.com

官方热线: 025-5229-8998

监督电话: 15950492658



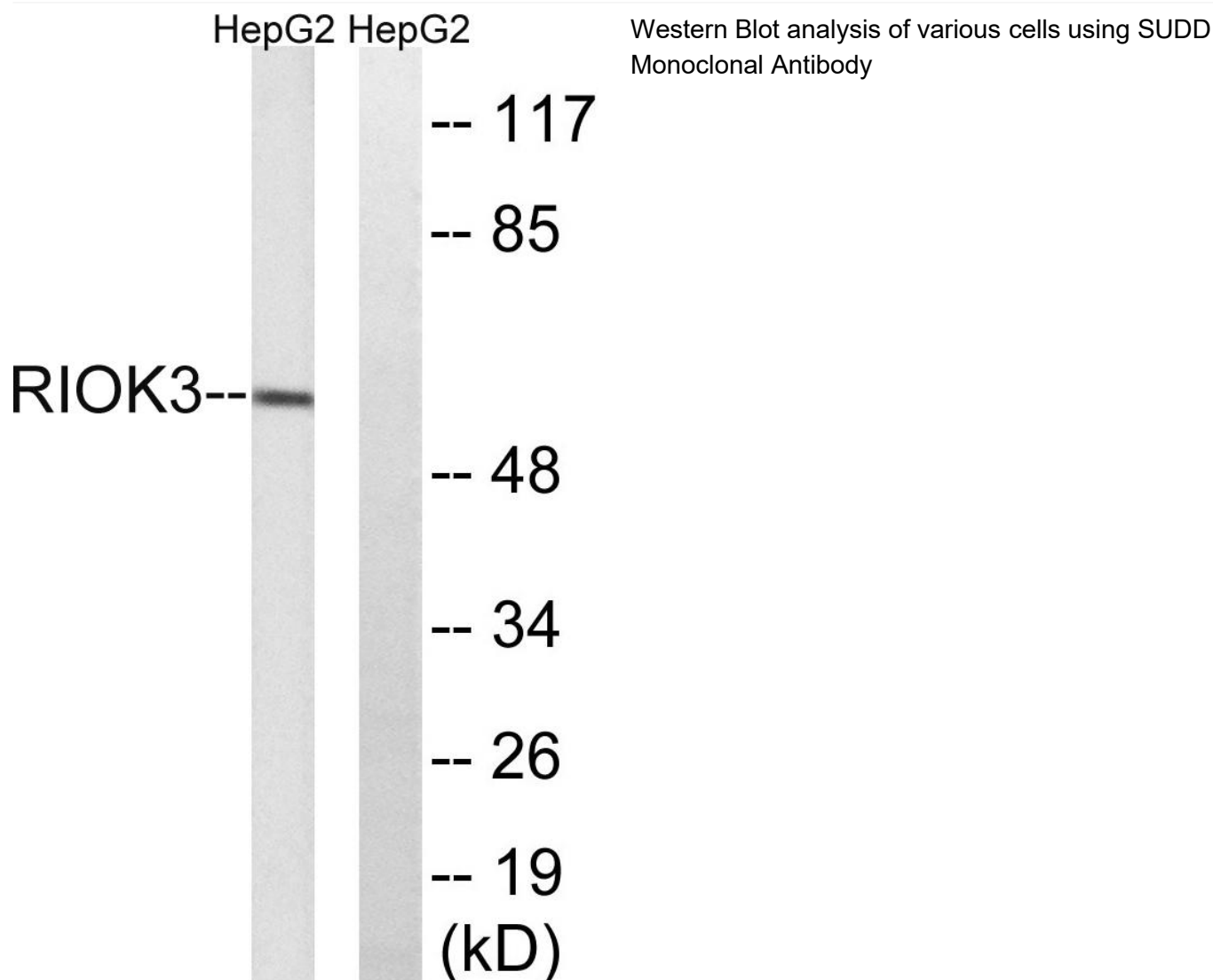
matters needing attention

Avoid repeated freezing and thawing!

Usage suggestions

This product can be used in immunological reaction related experiments. For more information, please consult technical personnel.

Products Images



Nanjing BYabs science technology Co.,Ltd

网址: www.njbybio.com

官方热线: 025-5229-8998

监督电话: 15950492658