



# GSK3 $\alpha$ / $\beta$ Monoclonal Antibody

Catalog No	BYmab-14770
Isotype	IgG
Reactivity	Human;Mouse;Rat;Drosophila;Drosophila
Applications	WB
Gene Name	GSK3A/GSK3B
Protein Name	Glycogen synthase kinase-3 alpha/beta
Immunogen	The antiserum was produced against synthesized peptide derived from human GSK3 alpha/beta. AA range:246-295
Specificity	GSK3 $\alpha$ / $\beta$ Monoclonal Antibody detects endogenous levels of GSK3 $\alpha$ / $\beta$ protein.
Formulation	Liquid in PBS containing 50% glycerol, 0.5% BSA and 0.02% sodium azide.
Source	Monoclonal, Mouse,IgG
Purification	The antibody was affinity-purified from mouse antiserum by affinity-chromatography using epitope-specific immunogen.
Dilution	WB 1:500-2000
Concentration	1 mg/ml
Purity	$\geq 90\%$
Storage Stability	-20°C/1 year
Synonyms	GSK3A; Glycogen synthase kinase-3 alpha; GSK-3 alpha; Serine/threonine-protein kinase GSK3A; GSK3B; Glycogen synthase kinase-3 beta; GSK-3 beta; Serine/threonine-protein kinase GSK3B
Observed Band	51 46kD
Cell Pathway	mitochondrion,cytosol,beta-catenin destruction complex,postsynapse,
Tissue Specificity	Brain,Eye,Foreskin,Lung,Pancreas,Platelet,Testis,
Function	catalytic activity:ATP + [tau protein] = ADP + [tau protein] phosphate.,function:Implicated in the hormonal control of several regulatory proteins including glycogen synthase, MYB and the transcription factor JUN.,similarity:Belongs to the protein kinase superfamily.,similarity:Belongs to the protein kinase superfamily. CMGC Ser/Thr protein kinase family. GSK-3 subfamily.,similarity:Contains 1 protein kinase domain.,subunit:Monomer.,
Background	glycogen synthase kinase 3 alpha(GSK3A) Homo sapiens This gene encodes a multifunctional Ser/Thr protein kinase that is implicated in the control of several

Nanjing BYabscience technology Co.,Ltd



regulatory proteins including glycogen synthase, and transcription factors, such as JUN. It also plays a role in the WNT and PI3K signaling pathways, as well as regulates the production of beta-amyloid peptides associated with Alzheimer's disease. [provided by RefSeq, Oct 2011],

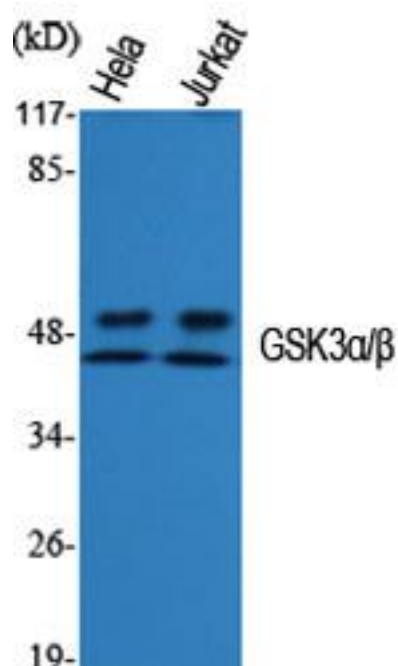
**matters needing attention**

Avoid repeated freezing and thawing!

**Usage suggestions**

This product can be used in immunological reaction related experiments. For more information, please consult technical personnel.

## Products Images



Western Blot analysis of various cells using GSK3  $\alpha$  /  $\beta$  Monoclonal Antibody

Nanjing BYabs science technology Co.,Ltd

网址: [www.njbybio.com](http://www.njbybio.com)

官方热线: 025-5229-8998

监督电话: 15950492658