



CD2 Monoclonal Antibody

| | |
|--------------------|---|
| Catalog No | BYmab-13982 |
| Isotype | IgG |
| Reactivity | Human;Rat;Mouse; |
| Applications | WB |
| Gene Name | CD2 |
| Protein Name | T-cell surface antigen CD2 |
| Immunogen | The antiserum was produced against synthesized peptide derived from the N-terminal region of human CD2. AA range:31-80 |
| Specificity | CD2 Monoclonal Antibody detects endogenous levels of CD2 protein. |
| Formulation | Liquid in PBS containing 50% glycerol, 0.5% BSA and 0.02% sodium azide. |
| Source | Monoclonal, Mouse,IgG |
| Purification | The antibody was affinity-purified from mouse antiserum by affinity-chromatography using epitope-specific immunogen. |
| Dilution | WB 1:500-2000 |
| Concentration | 1 mg/ml |
| Purity | ≥90% |
| Storage Stability | -20°C/1 year |
| Synonyms | CD2; SRBC; T-cell surface antigen CD2; Erythrocyte receptor; LFA-2; LFA-3 receptor; Rosette receptor; T-cell surface antigen T11/Leu-5; CD2 |
| Observed Band | 39kD |
| Cell Pathway | Cell membrane ; Single-pass type I membrane protein . |
| Tissue Specificity | Expressed in natural killer cells (at protein level). |
| Function | function:CD2 interacts with lymphocyte function-associated antigen (LFA-3) and CD48/BCM1 to mediate adhesion between T-cells and other cell types. CD2 is implicated in the triggering of T-cells, the cytoplasmic domain is implicated in the signaling function.,online information:CD2 entry,similarity:Contains 1 Ig-like C2-type (immunoglobulin-like) domain.,similarity:Contains 1 Ig-like V-type (immunoglobulin-like) domain.,subunit:Interacts with CD2AP (By similarity). Interacts with PSTPIP1., |
| Background | The protein encoded by this gene is a surface antigen found on all peripheral blood T-cells. The encoded protein interacts with LFA3 (CD58) on antigen presenting cells to optimize immune recognition. A locus control region (LCR) has |

Nanjing BYabscience technology Co.,Ltd



been found in the 3' flanking sequence of this gene. [provided by RefSeq, Jun 2016],

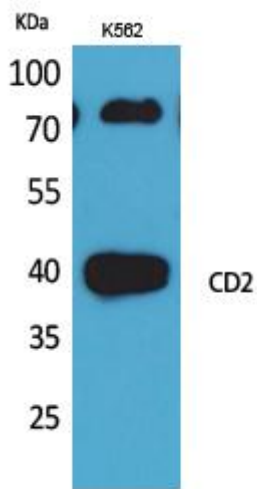
matters needing attention

Avoid repeated freezing and thawing!

Usage suggestions

This product can be used in immunological reaction related experiments. For more information, please consult technical personnel.

Products Images



Western Blot analysis of various cells using CD2 Monoclonal Antibody