



GPR34 Monoclonal Antibody

Catalog No	BYmab-13332
Isotype	IgG
Reactivity	Human;Mouse;Rat;Monkey
Applications	WB
Gene Name	GPR34
Protein Name	Probable G-protein coupled receptor 34
Immunogen	The antiserum was produced against synthesized peptide derived from human GPR34. AA range:181-230
Specificity	GPR34 Monoclonal Antibody detects endogenous levels of GPR34 protein.
Formulation	Liquid in PBS containing 50% glycerol, 0.5% BSA and 0.02% sodium azide.
Source	Monoclonal, Mouse,IgG
Purification	The antibody was affinity-purified from mouse antiserum by affinity-chromatography using epitope-specific immunogen.
Dilution	WB 1:500-2000
Concentration	1 mg/ml
Purity	≥90%
Storage Stability	-20°C/1 year
Synonyms	GPR34; Probable G-protein coupled receptor 34
Observed Band	44kD
Cell Pathway	Cell membrane ; Multi-pass membrane protein .
Tissue Specificity	Broadly expressed.
Function	function:Orphan receptor.,similarity:Belongs to the G-protein coupled receptor 1 family.,tissue specificity:Broadly expressed.,
Background	G protein-coupled receptors (GPCRs), such as GPR34, are integral membrane proteins containing 7 putative transmembrane domains (TMs). These proteins mediate signals to the interior of the cell via activation of heterotrimeric G proteins that in turn activate various effector proteins, ultimately resulting in a physiologic response.[supplied by OMIM, Apr 2006],
matters needing attention	Avoid repeated freezing and thawing!

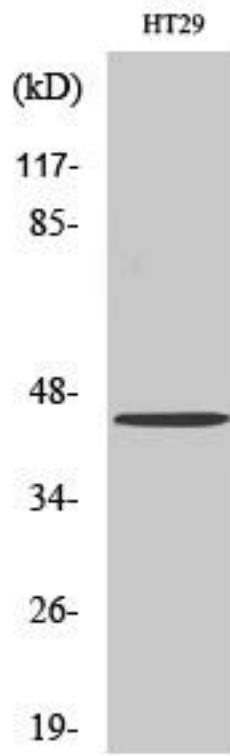
Nanjing BYabscience technology Co.,Ltd



Usage suggestions

This product can be used in immunological reaction related experiments. For more information, please consult technical personnel.

Products Images



Western Blot analysis of various cells using GPR34 Monoclonal Antibody