



GPR156 Monoclonal Antibody

Catalog No	BYmab-13311
Isotype	IgG
Reactivity	Human;Rat;Mouse;
Applications	WB
Gene Name	GPR156
Protein Name	Probable G-protein coupled receptor 156
Immunogen	The antiserum was produced against synthesized peptide derived from human GPR156. AA range:501-550
Specificity	GPR156 Monoclonal Antibody detects endogenous levels of GPR156 protein.
Formulation	Liquid in PBS containing 50% glycerol, 0.5% BSA and 0.02% sodium azide.
Source	Monoclonal, Mouse,IgG
Purification	The antibody was affinity-purified from mouse antiserum by affinity-chromatography using epitope-specific immunogen.
Dilution	WB 1:500-2000
Concentration	1 mg/ml
Purity	≥90%
Storage Stability	-20°C/1 year
Synonyms	GPR156; GABABL; PGR28; Probable G-protein coupled receptor 156; G-protein coupled receptor PGR28; GABAB-related G-protein coupled receptor
Observed Band	89kD
Cell Pathway	Cell membrane; Multi-pass membrane protein.
Tissue Specificity	Ubiquitous expression both in the CNS and in peripheral tissues. Very high expression in fetal brain and testis relative to expression in other tissues.
Function	function:Orphan receptor.,similarity:Belongs to the G-protein coupled receptor 3 family. GABA-B receptor subfamily.,tissue specificity:Ubiquitous expression both in the CNS and in peripheral tissues. Very high expression in fetal brain and testis relative to expression in other tissues.,
Background	G protein-coupled receptors (GPCRs) are a large superfamily of cell surface receptors characterized by 7 helical transmembrane domains, together with N-terminal extracellular and C-terminal intracellular domains.[supplied by OMIM, Mar 2008],

Nanjing BYabscience technology Co.,Ltd

网址: www.njbybio.com

官方热线: 025-5229-8998

监督电话: 15950492658



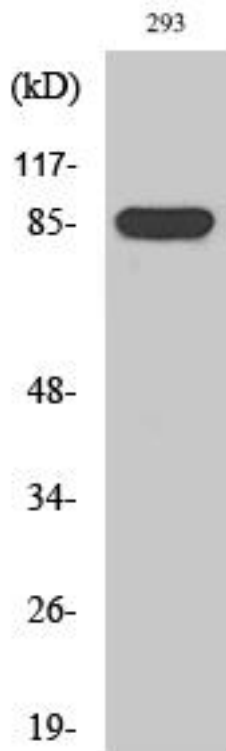
matters needing attention

Avoid repeated freezing and thawing!

Usage suggestions

This product can be used in immunological reaction related experiments. For more information, please consult technical personnel.

Products Images



Western Blot analysis of various cells using GPR156 Monoclonal Antibody