



GPR15 Monoclonal Antibody

Catalog No	BYmab-13306
Isotype	IgG
Reactivity	Human;Mouse
Applications	WB
Gene Name	GPR15
Protein Name	G-protein coupled receptor 15
Immunogen	The antiserum was produced against synthesized peptide derived from human GPR15. AA range:201-250
Specificity	GPR15 Monoclonal Antibody detects endogenous levels of GPR15 protein.
Formulation	Liquid in PBS containing 50% glycerol, 0.5% BSA and 0.02% sodium azide.
Source	Monoclonal, Mouse,IgG
Purification	The antibody was affinity-purified from mouse antiserum by affinity-chromatography using epitope-specific immunogen.
Dilution	WB 1:500-2000
Concentration	1 mg/ml
Purity	≥90%
Storage Stability	-20°C/1 year
Synonyms	GPR15; G-protein coupled receptor 15; Brother of Bonzo; BoB
Observed Band	40kD
Cell Pathway	Cell membrane; Multi-pass membrane protein.
Tissue Specificity	Liver,
Function	function:Probable chemokine receptor. Alternative coreceptor with CD4 for HIV-1 infection.,similarity:Belongs to the G-protein coupled receptor 1 family.,
Background	This gene encodes a G protein-coupled receptor that acts as a chemokine receptor for human immunodeficiency virus type 1 and 2. The encoded protein localizes to the cell membrane. [provided by RefSeq, Nov 2012],
matters needing attention	Avoid repeated freezing and thawing!

Nanjing BYabscience technology Co.,Ltd

网址: www.njbybio.com

官方热线: 025-5229-8998

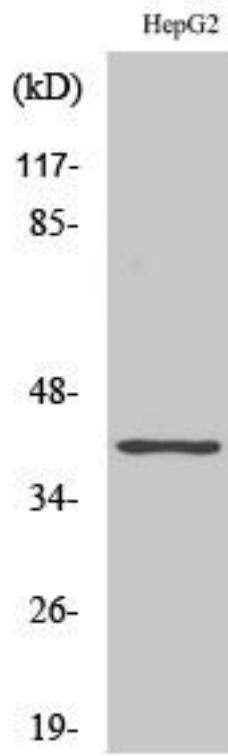
监督电话: 15950492658



Usage suggestions

This product can be used in immunological reaction related experiments. For more information, please consult technical personnel.

Products Images



Western Blot analysis of various cells using GPR15 Monoclonal Antibody

Nanjing BYabs science technology Co.,Ltd

网址: www.njbybio.com

官方热线: 025-5229-8998

监督电话: 15950492658