



GPR100 Monoclonal Antibody

Catalog No	BYmab-13279
Isotype	IgG
Reactivity	Human;Rat;Mouse;
Applications	WB
Gene Name	RXFP4
Protein Name	Relaxin-3 receptor 2
Immunogen	The antiserum was produced against synthesized peptide derived from human GPR100. AA range:321-370
Specificity	GPR100 Monoclonal Antibody detects endogenous levels of GPR100 protein.
Formulation	Liquid in PBS containing 50% glycerol, 0.5% BSA and 0.02% sodium azide.
Source	Monoclonal, Mouse,IgG
Purification	The antibody was affinity-purified from mouse antiserum by affinity-chromatography using epitope-specific immunogen.
Dilution	WB 1:500-2000
Concentration	1 mg/ml
Purity	≥90%
Storage Stability	-20°C/1 year
Synonyms	RXFP4; GPR100; RLN3R2; Relaxin-3 receptor 2; RLN3 receptor 2; G-protein coupled receptor 100; G-protein coupled receptor GPCR142; Insulin-like peptide INSL5 receptor; Relaxin family peptide receptor 4
Observed Band	38kD
Cell Pathway	Cell membrane; Multi-pass membrane protein.
Tissue Specificity	Expressed in a broader range of tissues including brain, kidney, testis, thymus, placenta, prostate, salivary gland, thyroid and colon.
Function	function:Receptor for relaxin-3, as well as bradykinin and kallidin. Binding of the ligand inhibit cAMP accumulation.,similarity:Belongs to the G-protein coupled receptor 1 family.,tissue specificity:Expressed in a broader range of tissues including brain, kidney, testis, thymus, placenta, prostate, salivary gland, thyroid and colon.,
Background	GPR100 is a member of the rhodopsin family of G protein-coupled receptors (GPRs) (Fredriksson et al., 2003 [PubMed 14623098]).[supplied by OMIM, Mar 2008],

Nanjing BYabscience technology Co.,Ltd



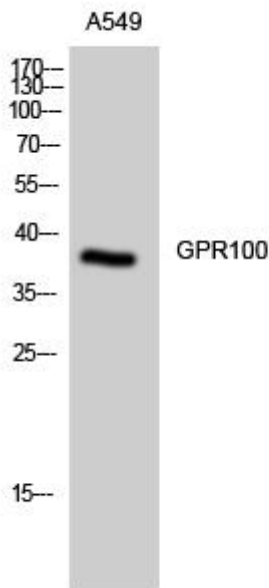
matters needing attention

Avoid repeated freezing and thawing!

Usage suggestions

This product can be used in immunological reaction related experiments. For more information, please consult technical personnel.

Products Images



Western Blot analysis of various cells using GPR100 Monoclonal Antibody