



# APLP-1 Monoclonal Antibody

<b>Catalog No</b>	BYmab-12849
<b>Isotype</b>	IgG
<b>Reactivity</b>	Human;Mouse
<b>Applications</b>	WB
<b>Gene Name</b>	APLP1
<b>Protein Name</b>	Amyloid-like protein 1
<b>Immunogen</b>	Synthesized peptide derived from APLP-1 . at AA range: 360-440
<b>Specificity</b>	APLP-1 Monoclonal Antibody detects endogenous levels of APLP-1 protein.
<b>Formulation</b>	Liquid in PBS containing 50% glycerol, 0.5% BSA and 0.02% sodium azide.
<b>Source</b>	Monoclonal, Mouse,IgG
<b>Purification</b>	The antibody was affinity-purified from mouse antiserum by affinity-chromatography using epitope-specific immunogen.
<b>Dilution</b>	WB 1:500-2000
<b>Concentration</b>	1 mg/ml
<b>Purity</b>	≥90%
<b>Storage Stability</b>	-20°C/1 year
<b>Synonyms</b>	APLP1; Amyloid-like protein 1; APLP; APLP-1
<b>Observed Band</b>	72kD
<b>Cell Pathway</b>	Cell membrane; Single-pass type I membrane protein.; [C30]: Cytoplasm. C-terminally processed in the Golgi complex.
<b>Tissue Specificity</b>	Expressed in the cerebral cortex where it is localized to the postsynaptic density (PSD).
<b>Function</b>	domain:The NPXY sequence motif found in many tyrosine-phosphorylated proteins is required for the specific binding of the PID domain. However, additional amino acids either N- or C-terminal to the NPXY motif are often required for complete interaction. The NPXY site is also involved in clathrin-mediated endocytosis.,function:May play a role in postsynaptic function. The C-terminal gamma-secretase processed fragment, ALID1, activates transcription activation through APBB1 (Fe65) binding (By similarity). Couples to JIP signal transduction through C-terminal binding. May interact with cellular G-protein signaling pathways. Can regulate neurite outgrowth through binding to components of the extracellular matrix such as heparin and collagen I.,function:The gamma-CTF peptide, C30, is a potent enhancer of neuronal apoptosis.,miscellaneous:Binds

**Nanjing BYabscience technology Co.,Ltd**



zinc and copper in the extracellular domain. Zinc-

#### Background

This gene encodes a member of the highly conserved amyloid precursor protein gene family. The encoded protein is a membrane-associated glycoprotein that is cleaved by secretases in a manner similar to amyloid beta A4 precursor protein cleavage. This cleavage liberates an intracellular cytoplasmic fragment that may act as a transcriptional activator. The encoded protein may also play a role in synaptic maturation during cortical development. Alternatively spliced transcript variants encoding different isoforms have been described. [provided by RefSeq, Jul 2008],

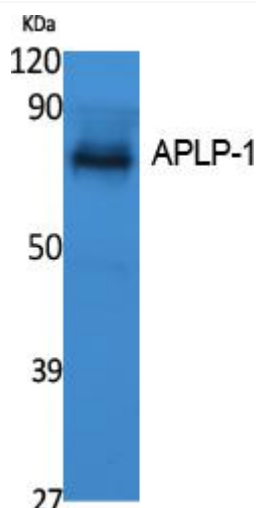
#### matters needing attention

Avoid repeated freezing and thawing!

#### Usage suggestions

This product can be used in immunological reaction related experiments. For more information, please consult technical personnel.

### Products Images



Western Blot analysis of various cells using APLP-1 Monoclonal Antibody

Nanjing BYabs science technology Co.,Ltd

网址: [www.njbybio.com](http://www.njbybio.com)

官方热线: 025-5229-8998

监督电话: 15950492658