



# Cerebellin 1 Monoclonal Antibody

<b>Catalog No</b>	BYmab-12698
<b>Isotype</b>	IgG
<b>Reactivity</b>	Human;Mouse;Rat
<b>Applications</b>	WB
<b>Gene Name</b>	CBLN1
<b>Protein Name</b>	Cerebellin-1
<b>Immunogen</b>	The antiserum was produced against synthesized peptide derived from human CBLN1. AA range:131-180
<b>Specificity</b>	Cerebellin 1 Monoclonal Antibody detects endogenous levels of Cerebellin 1 protein.
<b>Formulation</b>	Liquid in PBS containing 50% glycerol, 0.5% BSA and 0.02% sodium azide.
<b>Source</b>	Monoclonal, Mouse,IgG
<b>Purification</b>	The antibody was affinity-purified from mouse antiserum by affinity-chromatography using epitope-specific immunogen.
<b>Dilution</b>	WB 1:500-2000
<b>Concentration</b>	1 mg/ml
<b>Purity</b>	≥90%
<b>Storage Stability</b>	-20°C/1 year
<b>Synonyms</b>	CBLN1; Cerebellin-1; Precerebellin
<b>Observed Band</b>	25kD
<b>Cell Pathway</b>	Secreted . Cell junction, synapse, postsynaptic cell membrane .
<b>Tissue Specificity</b>	In the Purkinje cells postsynaptic structures. In the cerebellum, cerebellin is much less abundant than [des-Ser1]-cerebellin.
<b>Function</b>	developmental stage:Low at birth, the cerebellin concentration increases between day 5 and 15, and reaches peak values between day 21 and 56.;function:Cerebellin exerts neuromodulatory functions. Directly stimulates norepinephrine release via the adenylate cyclase/PKA-dependent signaling pathway; and indirectly enhances adrenocortical secretion in vivo, through a paracrine mechanism involving medullary catecholamine release.;function:Cerebellin-1 is required for synapse integrity and synaptic plasticity. Required for the ER export and secretion of CBLN3.;PTM:The proteolytic processing to yield cerebellin seems to occur either prior to the secretion by presynaptic neurons and subsequent oligomerization or in some other location after release of the mature protein.;similarity:Contains 1 C1q

**Nanjing BYabscience technology Co.,Ltd**



domain.,subcellular location: Might be bound to, or associated with, a membrane.,subunit: Homohexamer;

#### Background

This gene encodes a cerebellum-specific precursor protein, precerebellin, with similarity to the globular (non-collagen-like) domain of complement component C1qB. Precerebellin is processed to give rise to several derivatives, including the hexadecapeptide, cerebellin, which is highly enriched in postsynaptic structures of Purkinje cells. Cerebellin has also been found in human and rat adrenals, where it has been shown to enhance the secretory activity of this gland. [provided by RefSeq, Aug 2008],

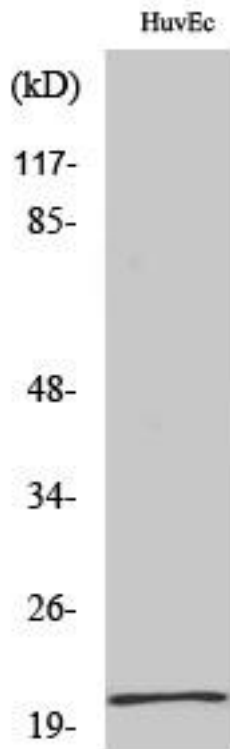
#### matters needing attention

Avoid repeated freezing and thawing!

#### Usage suggestions

This product can be used in immunological reaction related experiments. For more information, please consult technical personnel.

## Products Images



Western Blot analysis of various cells using Cerebellin 1 Monoclonal Antibody