



CECR9 mouse mAb

Catalog No	BYmab-12364
Isotype	IgG
Reactivity	Human;Rat;Mouse;
Applications	WB
Gene Name	CECR9
Protein Name	CECR9
Immunogen	Synthesized peptide derived from human CECR9 AA range: 69-119
Specificity	This antibody detects endogenous levels of CECR9 at Human
Formulation	Liquid in PBS containing 50% glycerol, 0.5% BSA and 0.02% sodium azide.
Source	Monoclonal, Mouse,IgG
Purification	The antibody was affinity-purified from mouse antiserum by affinity-chromatography using epitope-specific immunogen.
Dilution	WB 1:500-2000
Concentration	1 mg/ml
Purity	≥90%
Storage Stability	-20°C/1 year
Synonyms	
Observed Band	
Cell Pathway	Secreted .
Tissue Specificity	Ubiquitously expressed with higher expression in heart.
Function	caution:Product of a dubious gene prediction.,miscellaneous:Candidate gene for the Cat Eye Syndrome (CES), a developmental disorder associated with the duplication of a 2 Mb region of 22q11.2. Duplication usually takes in the form of a supernumerary bisatellited isodicentric chromosome, resulting in four copies of the region (represents an inv dup(22)(q11)). CES is characterized clinically by the combination of coloboma of the iris and anal atresia with fistula, downslanting palpebral fissures, preauricular tags and/or pits, frequent occurrence of heart and renal malformations, and normal or near-normal mental development.,tissue specificity:Ubiquitously expressed with higher expression in heart.,
Background	

Nanjing BYabscience technology Co.,Ltd



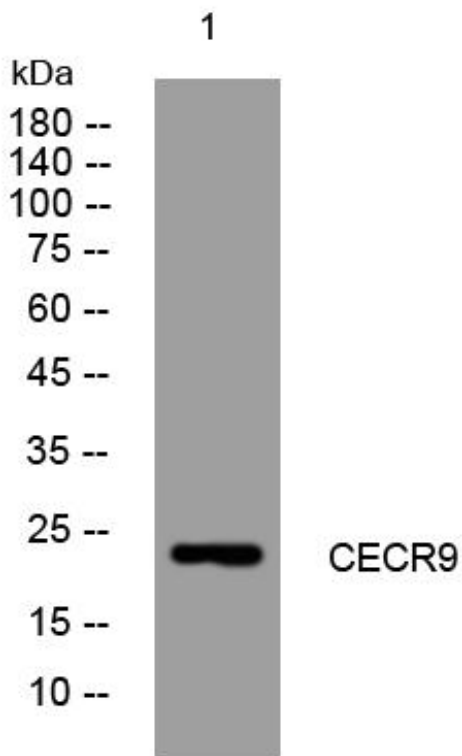
matters needing attention

Avoid repeated freezing and thawing!

Usage suggestions

This product can be used in immunological reaction related experiments. For more information, please consult technical personnel.

Products Images



Western Blot analysis of various cells using CECR9 mouse mAb