



# KLF3 mouse mAb

<b>Catalog No</b>	BYmab-12218
<b>Isotype</b>	IgG
<b>Reactivity</b>	Human; Mouse
<b>Applications</b>	WB
<b>Gene Name</b>	KLF3 BKLF
<b>Protein Name</b>	KLF3
<b>Immunogen</b>	Synthesized peptide derived from human KLF3 AA range: 51-101
<b>Specificity</b>	This antibody detects endogenous levels of KLF3 at Human/Mouse
<b>Formulation</b>	Liquid in PBS containing 50% glycerol, 0.5% BSA and 0.02% sodium azide.
<b>Source</b>	Monoclonal, Mouse,IgG
<b>Purification</b>	The antibody was affinity-purified from mouse antiserum by affinity-chromatography using epitope-specific immunogen.
<b>Dilution</b>	WB 1:500-2000
<b>Concentration</b>	1 mg/ml
<b>Purity</b>	≥90%
<b>Storage Stability</b>	-20°C/1 year
<b>Synonyms</b>	
<b>Observed Band</b>	
<b>Cell Pathway</b>	Nucleus .
<b>Tissue Specificity</b>	
<b>Function</b>	function: Binds to the CACCC box of erythroid cell-expressed genes. May play a role in hematopoiesis.,PTM: Sumoylated by SUMO1. Sumoylation is enhanced by PIAS1, PIAS2alpha and PIAS2beta, and PIAS4, but not by Pc2. Enhances transcriptional repression, but has no effect on DNA binding. Sumoylation on Lys-198 is the major site.,similarity: Belongs to the krueppel C2H2-type zinc-finger protein family.,similarity: Contains 3 C2H2-type zinc fingers.,subunit: Monomer.,
<b>Background</b>	
<b>matters needing attention</b>	Avoid repeated freezing and thawing!

**Nanjing BYabscience technology Co.,Ltd**

网址: [www.njbybio.com](http://www.njbybio.com)

官方热线: 025-5229-8998

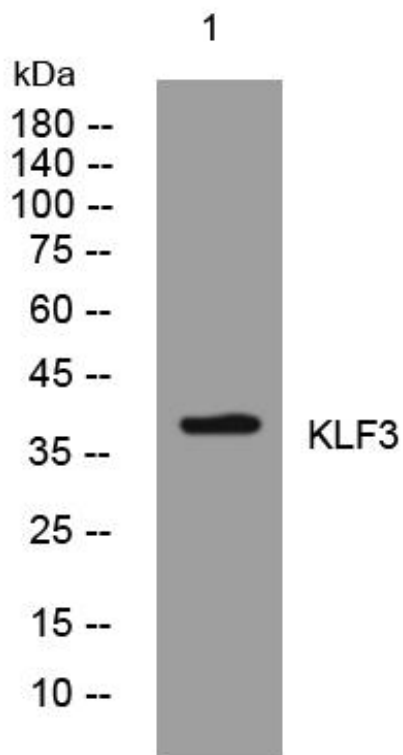
监督电话: 15950492658



### Usage suggestions

This product can be used in immunological reaction related experiments. For more information, please consult technical personnel.

## Products Images



Western Blot analysis of various cells using KLF3 mouse mAb

Nanjing BYabs science technology Co.,Ltd

网址: [www.njbybio.com](http://www.njbybio.com)

官方热线: 025-5229-8998

监督电话: 15950492658