

FKB15 mouse mAb

Catalog No	BYmab-12024
Isotype	IgG
Reactivity	Human; Mouse
Applications	WB
Gene Name	FKBP15 KIAA0674
Protein Name	FKB15
Immunogen	Synthesized peptide derived from human FKB15 AA range: 847-897
Specificity	This antibody detects endogenous levels of FKB15 at Human/Mouse
Formulation	Liquid in PBS containing 50% glycerol, 0.5% BSA and 0.02% sodium azide.
Source	Monoclonal, Mouse,IgG
Purification	The antibody was affinity-purified from mouse antiserum by affinity-chromatography using epitope-specific immunogen.
Dilution	WB 1:500-2000
Concentration	1 mg/ml
Purity	≥90%
Storage Stability	-20°C/1 year
Synonyms	
Observed Band	
Cell Pathway	Cytoplasm . Cell projection, axon . Early endosome . Present in axons and neuronal growth cones. .
Tissue Specificity	
Function	domain:The PPlase FKBP-type domain seems to be inactive both for FK506-binding and enzymatic activity.,function:May be involved in the cytoskeletal organization of neuronal growth cones. Seems to be inactive as a PPlase.,similarity:Belongs to the FKBP-type PPlase family.,similarity:Contains 1 PPlase FKBP-type domain.,subcellular location:Present in axons and neuronal growth cones.,
Background	
matters needing attention	Avoid repeated freezing and thawing!

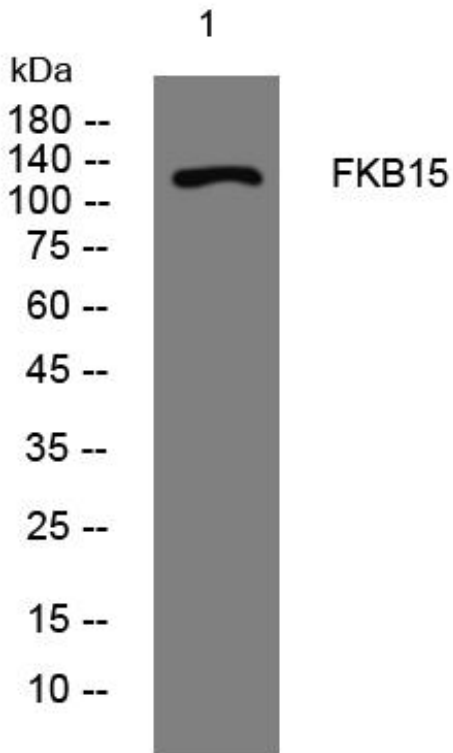
Nanjing BYabscience technology Co.,Ltd



Usage suggestions

This product can be used in immunological reaction related experiments. For more information, please consult technical personnel.

Products Images



Western Blot analysis of various cells using FKB15 mouse mAb

Nanjing BYabs science technology Co.,Ltd

网址: www.njbybio.com

官方热线: 025-5229-8998

监督电话: 15950492658