



## CP058 mouse mAb

Catalog No	BYmab-11820
Isotype	IgG
Reactivity	Human; Mouse;Rat
Applications	WB
Gene Name	C16orf58
Protein Name	CP058
Immunogen	Synthesized peptide derived from human CP058 AA range: 367-417
Specificity	This antibody detects endogenous levels of CP058 at Human/Mouse/Rat
Formulation	Liquid in PBS containing 50% glycerol, 0.5% BSA and 0.02% sodium azide.
Source	Monoclonal, Mouse,IgG
Purification	The antibody was affinity-purified from mouse antiserum by affinity-chromatography using epitope-specific immunogen.
Dilution	WB 1:500-2000
Concentration	1 mg/ml
Purity	≥90%
Storage Stability	-20°C/1 year
Synonyms	
Observed Band	
Cell Pathway	Membrane ; Single-pass membrane protein .
Tissue Specificity	
Function	similarity:Belongs to the UPF0420 family.,
Background	This gene encodes a putative transmembrane protein containing a conserved DUF647 domain that may be involved in protein-protein interaction. The encoded protein is related to a plant protein that participates in ultraviolet B light-sensing during root morphogenesis. [provided by RefSeq, Feb 2013],
matters needing attention	Avoid repeated freezing and thawing!

Nanjing BYabscience technology Co.,Ltd

网址: [www.njbybio.com](http://www.njbybio.com)

官方热线: 025-5229-8998

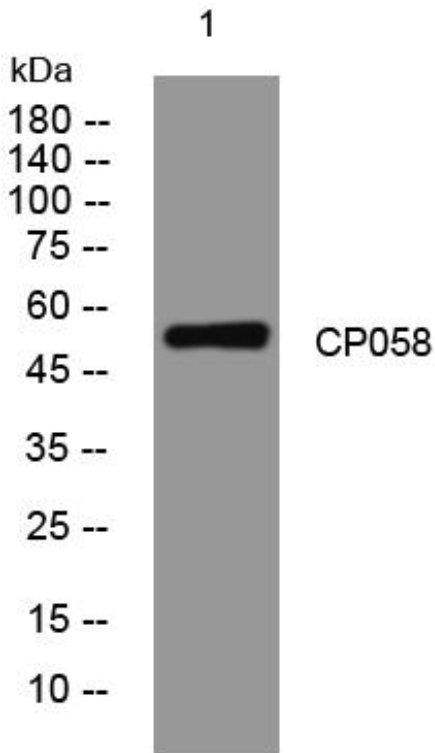
监督电话: 15950492658



### Usage suggestions

This product can be used in immunological reaction related experiments. For more information, please consult technical personnel.

## Products Images



Western Blot analysis of various cells using CP058 mouse mAb

Nanjing BYabs science technology Co.,Ltd

网址: [www.njbybio.com](http://www.njbybio.com)

官方热线: 025-5229-8998

监督电话: 15950492658