



MOT10 mouse mAb

Catalog No	BYmab-11812
Isotype	IgG
Reactivity	Human; Mouse;Rat
Applications	WB
Gene Name	SLC16A10 MCT10 TAT1
Protein Name	MOT10
Immunogen	Synthesized peptide derived from human MOT10 AA range: 163-213
Specificity	This antibody detects endogenous levels of MOT10 at Human/Mouse/Rat
Formulation	Liquid in PBS containing 50% glycerol, 0.5% BSA and 0.02% sodium azide.
Source	Monoclonal, Mouse,IgG
Purification	The antibody was affinity-purified from mouse antiserum by affinity-chromatography using epitope-specific immunogen.
Dilution	WB 1:500-2000
Concentration	1 mg/ml
Purity	≥90%
Storage Stability	-20°C/1 year
Synonyms	
Observed Band	
Cell Pathway	Cell membrane ; Multi-pass membrane protein . Basolateral cell membrane .
Tissue Specificity	Strongly expressed in kidney and skeletal muscle and at lower level in placenta and heart.
Function	function:Sodium-independent transporter that mediates the update of aromatic acid. Can function as a net efflux pathway for aromatic amino acids in the basolateral epithelial cells.,PTM:Not N-glycosylated.,similarity:Belongs to the major facilitator superfamily. Monocarboxylate porter (TC 2.A.1.13) family.,tissue specificity:Strongly expressed in kidney and skeletal muscle and at lower level in placenta and heart.,
Background	SLC16A10 is a member of a family of plasma membrane amino acid transporters that mediate the Na(+)-independent transport of aromatic amino acids across the plasma membrane.[supplied by OMIM, Apr 2004],

Nanjing BYabscience technology Co.,Ltd

网址: www.njbybio.com

官方热线: 025-5229-8998

监督电话: 15950492658



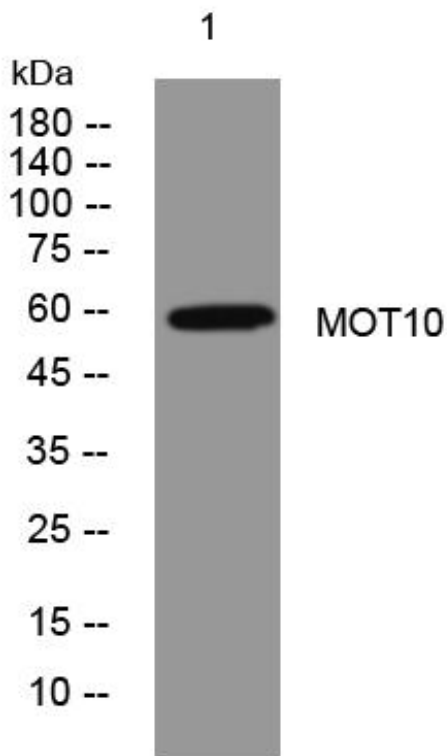
matters needing attention

Avoid repeated freezing and thawing!

Usage suggestions

This product can be used in immunological reaction related experiments. For more information, please consult technical personnel.

Products Images



Western Blot analysis of various cells using MOT10 mouse mAb

Nanjing BYabs science technology Co.,Ltd

网址: www.njbybio.com

官方热线: 025-5229-8998

监督电话: 15950492658