



# CCD41 mouse mAb

<b>Catalog No</b>	BYmab-11662
<b>Isotype</b>	IgG
<b>Reactivity</b>	Human; Mouse;Rat
<b>Applications</b>	WB
<b>Gene Name</b>	CCDC41
<b>Protein Name</b>	CCD41
<b>Immunogen</b>	Synthesized peptide derived from human CCD41 AA range: 321-371
<b>Specificity</b>	This antibody detects endogenous levels of CCD41 at Human/Mouse/Rat
<b>Formulation</b>	Liquid in PBS containing 50% glycerol, 0.5% BSA and 0.02% sodium azide.
<b>Source</b>	Monoclonal, Mouse,IgG
<b>Purification</b>	The antibody was affinity-purified from mouse antiserum by affinity-chromatography using epitope-specific immunogen.
<b>Dilution</b>	WB 1:500-2000
<b>Concentration</b>	1 mg/ml
<b>Purity</b>	≥90%
<b>Storage Stability</b>	-20°C/1 year
<b>Synonyms</b>	
<b>Observed Band</b>	
<b>Cell Pathway</b>	Cytoplasm, cytoskeleton, microtubule organizing center, centrosome, centriole . Localizes specifically to the distal appendage region of the centriole, which anchors the mother centriole to the plasma membrane. Localizes to centrioles at all stages of the cell cycle, including mitosis.
<b>Tissue Specificity</b>	
<b>Function</b>	
<b>Background</b>	
<b>matters needing attention</b>	Avoid repeated freezing and thawing!

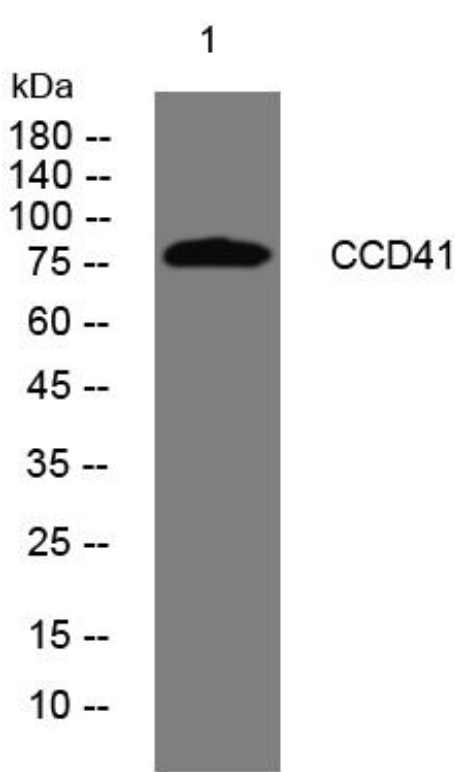
Nanjing BYabscience technology Co.,Ltd



**Usage suggestions**

This product can be used in immunological reaction related experiments. For more information, please consult technical personnel.

**Products Images**



Western Blot analysis of various cells using CCD41 mouse mAb