



GSG1 mouse mAb

Catalog No	BYmab-11628
Isotype	IgG
Reactivity	Human; Mouse;Rat
Applications	WB
Gene Name	GSG1 UNQ709/PRO1360
Protein Name	GSG1
Immunogen	Synthesized peptide derived from human GSG1 AA range: 24-74
Specificity	This antibody detects endogenous levels of GSG1 at Human/Mouse/Rat
Formulation	Liquid in PBS containing 50% glycerol, 0.5% BSA and 0.02% sodium azide.
Source	Monoclonal, Mouse,IgG
Purification	The antibody was affinity-purified from mouse antiserum by affinity-chromatography using epitope-specific immunogen.
Dilution	WB 1:500-2000
Concentration	1 mg/ml
Purity	≥90%
Storage Stability	-20°C/1 year
Synonyms	
Observed Band	
Cell Pathway	Endoplasmic reticulum membrane ; Multi-pass membrane protein . Colocalizes with PAPOLB in the endoplasmic reticulum. .
Tissue Specificity	
Function	function:May cause the redistribution of PAPOLB from the cytosol to the endoplasmic reticulum.,similarity:Belongs to the GSG1 family.,subcellular location:Colocalizes with PAPOLB in the endoplasmic reticulum.,subunit:Interacts with PAPOLB.,
Background	
matters needing attention	Avoid repeated freezing and thawing!

Nanjing BYabscience technology Co.,Ltd

网址: www.njbybio.com

官方热线: 025-5229-8998

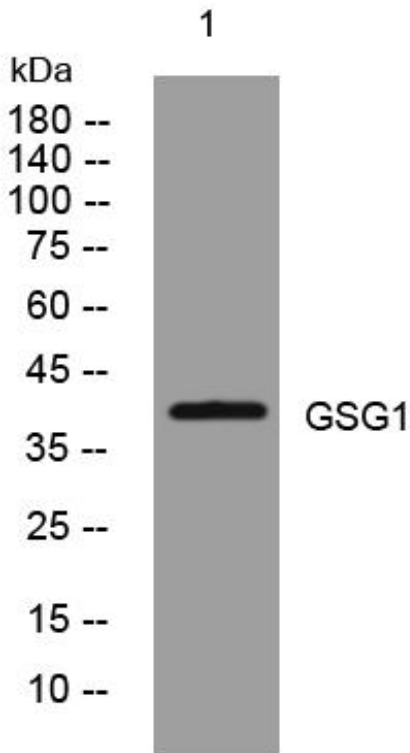
监督电话: 15950492658



Usage suggestions

This product can be used in immunological reaction related experiments. For more information, please consult technical personnel.

Products Images



Western Blot analysis of various cells using GSG1 mouse mAb

Nanjing BYabs science technology Co.,Ltd

网址: www.njbybio.com

官方热线: 025-5229-8998

监督电话: 15950492658