



# CLLU1 mouse mAb

<b>Catalog No</b>	BYmab-11570
<b>Isotype</b>	IgG
<b>Reactivity</b>	Human;Rat;Mouse;
<b>Applications</b>	WB
<b>Gene Name</b>	CLLU1
<b>Protein Name</b>	CLLU1
<b>Immunogen</b>	Synthesized peptide derived from human CLLU1 AA range: 23-73
<b>Specificity</b>	This antibody detects endogenous levels of CLLU1 at Human
<b>Formulation</b>	Liquid in PBS containing 50% glycerol, 0.5% BSA and 0.02% sodium azide.
<b>Source</b>	Monoclonal, Mouse,IgG
<b>Purification</b>	The antibody was affinity-purified from mouse antiserum by affinity-chromatography using epitope-specific immunogen.
<b>Dilution</b>	WB 1:500-2000
<b>Concentration</b>	1 mg/ml
<b>Purity</b>	≥90%
<b>Storage Stability</b>	-20°C/1 year
<b>Synonyms</b>	
<b>Observed Band</b>	
<b>Cell Pathway</b>	Cytoplasm . Detected in the cytoplasm of chronic lymphocytic leukemia (CLL) cells.
<b>Tissue Specificity</b>	Specifically expressed in chronic lymphocytic leukemia (CLL) cells from patients without immunoglobulin heavy-chain hypermutations. Expression is detected in all CLL cells and levels are similar in patients before and after treatment.
<b>Function</b>	disease:High CLLU1 expression in patients with CLL is associated with poor clinical outcome.,miscellaneous:Tridimensional modeling predicts that it may interact with the IL-4 receptor.,tissue specificity:Specifically expressed in chronic lymphocytic leukemia (CLL) cells from patients without immunoglobulin heavy-chain hypermutations.,
<b>Background</b>	The protein encoded by this gene is overexpressed in chronic lymphocytic leukemia (CLL) and serves as a good prognostic marker for the disease. Methylation of certain genes, including this one, have been associated with CLL. This gene is protein-coding in humans and non-protein coding in other primates. Three transcript variants, one protein-coding and the other two non-protein

**Nanjing BYabscience technology Co.,Ltd**



coding, have been found for this gene. [provided by RefSeq, Nov 2015],

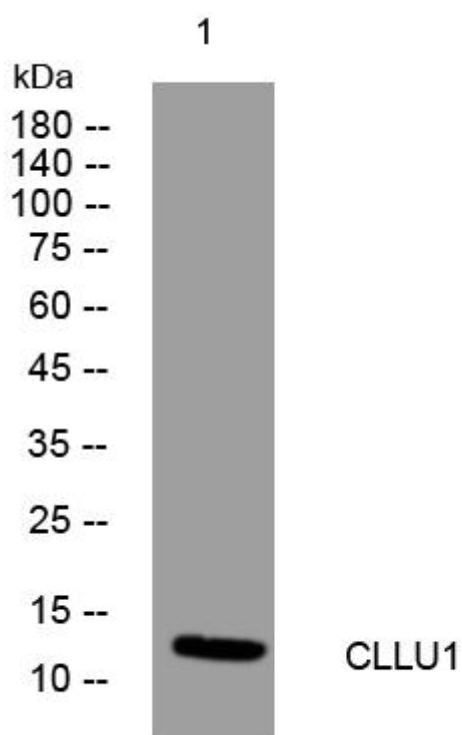
**matters needing attention**

Avoid repeated freezing and thawing!

**Usage suggestions**

This product can be used in immunological reaction related experiments. For more information, please consult technical personnel.

## Products Images



Western Blot analysis of various cells using CLLU1 mouse mAb