



S7A13 mouse mAb

Catalog No	BYmab-11461
Isotype	IgG
Reactivity	Human; Mouse;Rat
Applications	WB
Gene Name	SLC7A13 AGT1 XAT2
Protein Name	S7A13
Immunogen	Synthesized peptide derived from human S7A13 AA: 20-50
Specificity	This antibody detects endogenous levels of S7A13 at Human/Mouse/Rat
Formulation	Liquid in PBS containing 50% glycerol, 0.5% BSA and 0.02% sodium azide.
Source	Monoclonal, Mouse,IgG
Purification	The antibody was affinity-purified from mouse antiserum by affinity-chromatography using epitope-specific immunogen.
Dilution	WB 1:500-2000
Concentration	1 mg/ml
Purity	≥90%
Storage Stability	-20°C/1 year
Synonyms	
Observed Band	
Cell Pathway	Membrane ; Multi-pass membrane protein .
Tissue Specificity	Expressed in the kidney.
Function	function:Mediates the transport L-aspartate and L-glutamate in a sodium-independent manner.,similarity:Belongs to the amino acid-polyamine-organocation (APC) superfamily.,tissue specificity:Expressed in the kidney.,
Background	
matters needing attention	Avoid repeated freezing and thawing!

Nanjing BYabscience technology Co.,Ltd

网址: www.njbybio.com

官方热线: 025-5229-8998

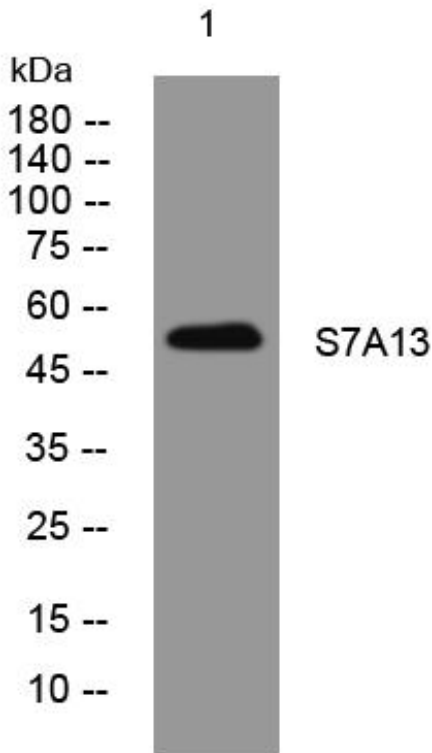
监督电话: 15950492658



Usage suggestions

This product can be used in immunological reaction related experiments. For more information, please consult technical personnel.

Products Images



Western Blot analysis of various cells using S7A13 mouse mAb

Nanjing BYabs science technology Co.,Ltd

网址: www.njbybio.com

官方热线: 025-5229-8998

监督电话: 15950492658