



# EXTL2 mouse mAb

<b>Catalog No</b>	BYmab-11139
<b>Isotype</b>	IgG
<b>Reactivity</b>	Human; Mouse
<b>Applications</b>	WB
<b>Gene Name</b>	EXTL2 EXTR2
<b>Protein Name</b>	EXTL2
<b>Immunogen</b>	Synthesized peptide derived from human EXTL2 AA range: 141-191
<b>Specificity</b>	This antibody detects endogenous levels of EXTL2 at Human/Mouse
<b>Formulation</b>	Liquid in PBS containing 50% glycerol, 0.5% BSA and 0.02% sodium azide.
<b>Source</b>	Monoclonal, Mouse,IgG
<b>Purification</b>	The antibody was affinity-purified from mouse antiserum by affinity-chromatography using epitope-specific immunogen.
<b>Dilution</b>	WB 1:500-2000
<b>Concentration</b>	1 mg/ml
<b>Purity</b>	≥90%
<b>Storage Stability</b>	-20°C/1 year
<b>Synonyms</b>	
<b>Observed Band</b>	
<b>Cell Pathway</b>	Endoplasmic reticulum membrane ; Single-pass type II membrane protein .; [Processed exostosin-like 2]: Secreted. A soluble form is found in the serum.
<b>Tissue Specificity</b>	Ubiquitous.
<b>Function</b>	catalytic activity:UDP-N-acetyl-D-glucosamine + beta-D-glucuronosyl-(1->3)-beta-D-galactosyl-(1->3)-beta-D-galactosyl-(1->4)-beta-D-xylosyl-proteoglycan = UDP + alpha-N-acetyl-D-glucosaminyl-(1->4)-beta-D-glucuronosyl-(1->3)-beta-D-galactosyl-(1->3)-beta-D-galactosyl-(1->4)-beta-D-xylosyl-proteoglycan.;function:Glycosyltransferase required for the biosynthesis of heparan-sulfate and responsible for the alternating addition of beta-1-4-linked glucuronic acid (GlcA) and alpha-1-4-linked N-acetylglucosamine (GlcNAc) units to nascent heparan sulfate chains.;online information:Exostosin-like 2,online information:GlycoGene database,pathway:Glycan metabolism; heparan sulfate biosynthesis.;PTM:The soluble form derives from the membrane form by proteolytic processing.;similarity:Belongs to the glycosyltransferase 47 family.;subcellular

**Nanjing BYabscience technology Co.,Ltd**



location:A soluble form is found in the serum.,tissue specifi

## Background

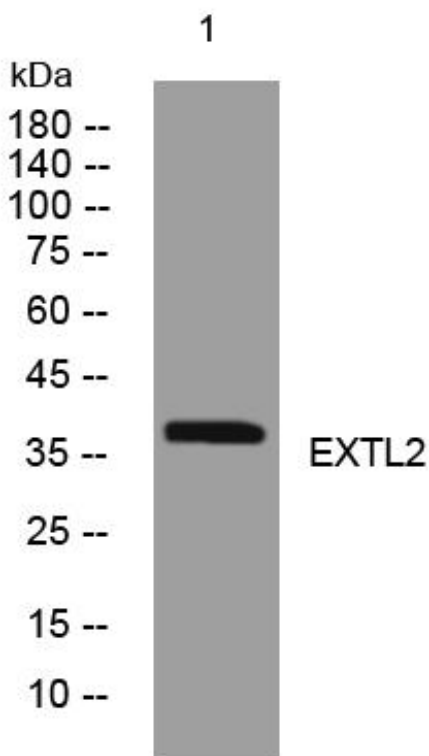
### matters needing attention

Avoid repeated freezing and thawing!

### Usage suggestions

This product can be used in immunological reaction related experiments. For more information, please consult technical personnel.

## Products Images



Western Blot analysis of various cells using EXTL2 mouse mAb

Nanjing BYabscience technology Co.,Ltd

网址: [www.njbybio.com](http://www.njbybio.com)

官方热线: 025-5229-8998

监督电话: 15950492658