



GRPE1 mouse mAb

Catalog No	BYmab-11128
Isotype	IgG
Reactivity	Human; Mouse;Rat
Applications	WB
Gene Name	GRPEL1 GREPEL1
Protein Name	GRPE1
Immunogen	Synthesized peptide derived from human GRPE1 AA range: 159-209
Specificity	This antibody detects endogenous levels of GRPE1 at Human/Mouse/Rat
Formulation	Liquid in PBS containing 50% glycerol, 0.5% BSA and 0.02% sodium azide.
Source	Monoclonal, Mouse,IgG
Purification	The antibody was affinity-purified from mouse antiserum by affinity-chromatography using epitope-specific immunogen.
Dilution	WB 1:500-2000
Concentration	1 mg/ml
Purity	≥90%
Storage Stability	-20°C/1 year
Synonyms	
Observed Band	
Cell Pathway	Mitochondrion matrix .
Tissue Specificity	
Function	function:Essential component of the PAM complex, a complex required for the translocation of transit peptide-containing proteins from the inner membrane into the mitochondrial matrix in an ATP-dependent manner. Seems to control the nucleotide-dependent binding of mitochondrial HSP70 to substrate proteins.,similarity:Belongs to the grpE family.,subunit:Probable component of the PAM complex at least composed of a mitochondrial HSP70 protein, GRPEL1 or GRPEL2, TIMM44, TIMM16/MAGMAS and TIMM14/DNAJC19 (By similarity). Binds to HSP70, HSC70 and HSJ1B.,
Background	

Nanjing BYabscience technology Co.,Ltd

网址: www.njbybio.com

官方热线: 025-5229-8998

监督电话: 15950492658



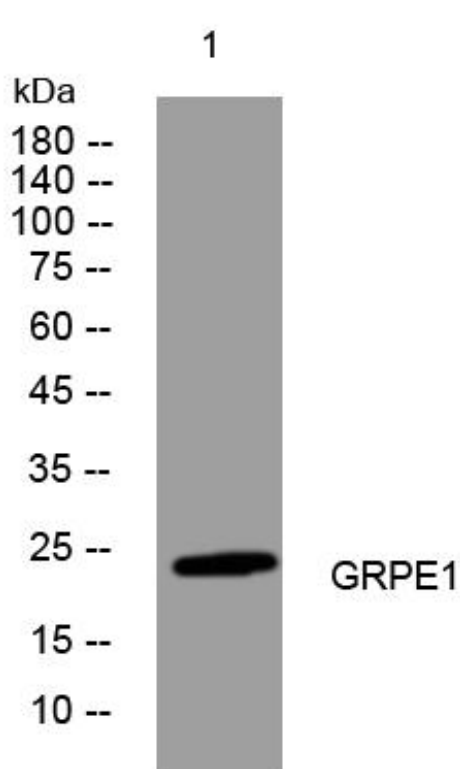
matters needing attention

Avoid repeated freezing and thawing!

Usage suggestions

This product can be used in immunological reaction related experiments. For more information, please consult technical personnel.

Products Images



Western Blot analysis of various cells using GRPE1 mouse mAb