



ADAT3 mouse mAb

Catalog No	BYmab-11101
Isotype	IgG
Reactivity	Human; Mouse;Rat
Applications	WB
Gene Name	ADAT3
Protein Name	ADAT3
Immunogen	Synthesized peptide derived from human ADAT3 AA range: 295-345
Specificity	This antibody detects endogenous levels of ADAT3 at Human/Mouse/Rat
Formulation	Liquid in PBS containing 50% glycerol, 0.5% BSA and 0.02% sodium azide.
Source	Monoclonal, Mouse,IgG
Purification	The antibody was affinity-purified from mouse antiserum by affinity-chromatography using epitope-specific immunogen.
Dilution	WB 1:500-2000
Concentration	1 mg/ml
Purity	≥90%
Storage Stability	-20°C/1 year
Synonyms	
Observed Band	
Cell Pathway	nucleoplasm,cytosol,
Tissue Specificity	
Function	caution:Val-225 is present instead of the conserved Glu which is an active site in the cytidine and deoxycytidylate deaminase family of enzymes. It is suggested that this protein may act as a regulatory subunit.,cofactor:Zinc.,function:May be involved in deamination of adenosine-34 to inosine in many tRNAs as a regulatory subunit .,PTM:Phosphorylated upon DNA damage, probably by ATM or ATR.,similarity:Belongs to the cytidine and deoxycytidylate deaminase family. ADAT3 subfamily.,
Background	This gene encodes a subunit of a tRNA-specific adenosine deaminase. This heterodimeric enzyme converts adenosine to inosine in the tRNA anticodon. A mutation in this gene causes a syndrome characterized by intellectual disability and strabismus. This gene shares its 5' exon with the overlapping gene,

Nanjing BYabscience technology Co.,Ltd



secretory carrier membrane protein 4 (Gene ID: 113178). [provided by RefSeq, Jul 2016],

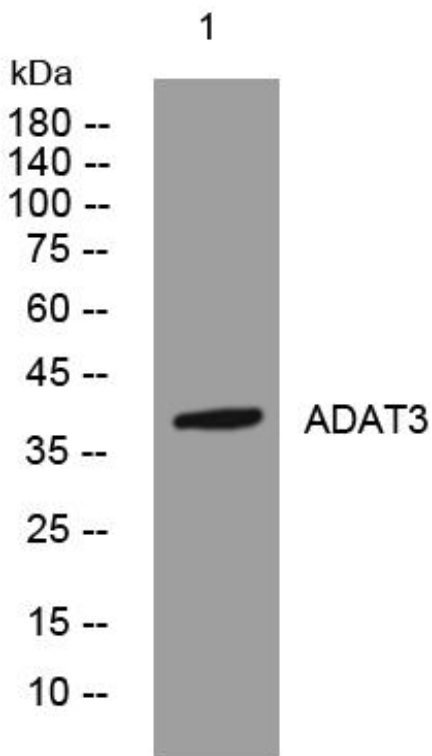
matters needing attention

Avoid repeated freezing and thawing!

Usage suggestions

This product can be used in immunological reaction related experiments. For more information, please consult technical personnel.

Products Images



Western Blot analysis of various cells using ADAT3 mouse mAb

Nanjing BYabs science technology Co.,Ltd

网址: www.njbybio.com

官方热线: 025-5229-8998

监督电话: 15950492658