



# TMPO Monoclonal Antibody

<b>Catalog No</b>	BYmab-10630
<b>Isotype</b>	IgG
<b>Reactivity</b>	Human;Mouse;Rat
<b>Applications</b>	WB
<b>Gene Name</b>	TMPO LAP2
<b>Protein Name</b>	thymopoietin
<b>Immunogen</b>	Synthetic peptide from human protein at AA range: 1-50
<b>Specificity</b>	The antibody detects endogenous TMPO protein
<b>Formulation</b>	Liquid in PBS containing 50% glycerol, 0.5% BSA and 0.02% sodium azide.
<b>Source</b>	Monoclonal, Mouse,IgG
<b>Purification</b>	The antibody was affinity-purified from mouse antiserum by affinity-chromatography using epitope-specific immunogen.
<b>Dilution</b>	WB 1:500-2000
<b>Concentration</b>	1 mg/ml
<b>Purity</b>	≥90%
<b>Storage Stability</b>	-20°C/1 year
<b>Synonyms</b>	TMPO LAP2
<b>Observed Band</b>	75 50kD
<b>Cell Pathway</b>	Nucleus. Chromosome. Expressed diffusely throughout the nucleus.
<b>Tissue Specificity</b>	Expressed in many tissues. Most abundant in adult thymus and fetal liver.
<b>Function</b>	regulation of transcription,
<b>Background</b>	The protein encoded by TMPO (thymopoietin) resides in the nucleus and may play a role in the assembly of the nuclear lamina, and thus help maintain the structural organization of the nuclear envelope. It may function as a receptor for the attachment of lamin filaments to the inner nuclear membrane. Mutations in TMPO are associated with dilated cardiomyopathy. Alternatively spliced transcript variants encoding different isoforms have been noted for TMPO.
<b>matters needing attention</b>	Avoid repeated freezing and thawing!

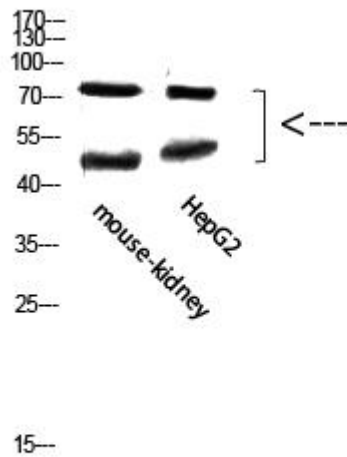
**Nanjing BYabscience technology Co.,Ltd**



### Usage suggestions

This product can be used in immunological reaction related experiments. For more information, please consult technical personnel.

## Products Images



Western Blot analysis of various cells using TMPO Monoclonal Antibody