



# XRCC1 (Phospho-Thr284) mouse mAb

Catalog No	BYmab-10515
Isotype	IgG
Reactivity	Human; Mouse;Rat
Applications	WB
Gene Name	XRCC1
Protein Name	XRCC1 (Phospho-Thr284)
Immunogen	Synthesized peptide derived from human XRCC1 (Phospho-Thr284)
Specificity	This antibody detects endogenous levels of XRCC1 (Phospho-Thr284) at Human, Mouse,Rat
Formulation	Liquid in PBS containing 50% glycerol, and 0.171% sodium azide.
Source	Monoclonal, Mouse,IgG
Purification	The antibody was affinity-purified from mouse antiserum by affinity-chromatography using epitope-specific immunogen.
Dilution	WB 1:500-2000
Concentration	1 mg/ml
Purity	≥90%
Storage Stability	-20°C/1 year
Synonyms	DNA repair protein XRCC1 (X-ray repair cross-complementing protein 1)
Observed Band	
Cell Pathway	Nucleus . Moves from the nucleoli to the global nuclear chromatin upon DNA damage. .
Tissue Specificity	Expressed in fibroblasts, retinal pigmented epithelial cells and lymphoblastoid cells (at protein level).
Function	function:Corrects defective DNA strand-break repair and sister chromatid exchange following treatment with ionizing radiation and alkylating agents.,polymorphism:Carriers of the polymorphic Gln-399 allele may be at greater risk for tobacco- and age-related DNA damage.,PTM:Phosphorylation of Ser-371 causes dimer dissociation. Phosphorylation by CK2 promotes interaction with APTX and APLF.,PTM:Sumoylated.,similarity:Contains 2 BRCT domains.,subcellular location:Accumulates at sites of DNA damage.,subunit:Homodimer. Interacts with polynucleotide kinase (PNK), DNA polymerase-beta (POLB) and DNA ligase III (LIG3). Interacts with APTX and APLF.,

Nanjing BYabscience technology Co.,Ltd



## Background

The protein encoded by this gene is involved in the efficient repair of DNA single-strand breaks formed by exposure to ionizing radiation and alkylating agents. This protein interacts with DNA ligase III, polymerase beta and poly (ADP-ribose) polymerase to participate in the base excision repair pathway. It may play a role in DNA processing during meogenesis and recombination in germ cells. A rare microsatellite polymorphism in this gene is associated with cancer in patients of varying radiosensitivity. [provided by RefSeq, Jul 2008],

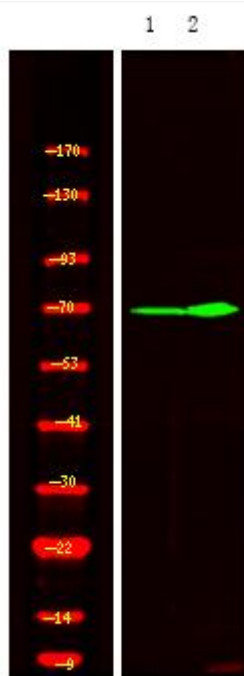
## matters needing attention

Avoid repeated freezing and thawing!

## Usage suggestions

This product can be used in immunological reaction related experiments. For more information, please consult technical personnel.

## Products Images



Western Blot analysis of various cells using XRCC1 (Phospho-Thr284) mouse mAb