



ILK-1 (Phospho-Ser343) mouse mAb

Catalog No	BYmab-10474
Isotype	IgG
Reactivity	Human; Mouse;Rat
Applications	WB
Gene Name	ILK ILK1 ILK2
Protein Name	ILK-1 (Phospho-Ser343)
Immunogen	Synthesized peptide derived from human ILK-1 (Phospho-Ser343)
Specificity	This antibody detects endogenous levels of ILK-1 (Phospho-Ser343) at Human, Mouse,Rat
Formulation	Liquid in PBS containing 50% glycerol, and 0.129% sodium azide.
Source	Monoclonal, Mouse,IgG
Purification	The antibody was affinity-purified from mouse antiserum by affinity-chromatography using epitope-specific immunogen.
Dilution	WB 1:500-2000
Concentration	1 mg/ml
Purity	≥90%
Storage Stability	-20°C/1 year
Synonyms	Integrin-linked protein kinase (EC 2.7.11.1) (59 kDa serine/threonine-protein kinase) (ILK-1) (ILK-2) (p59ILK)
Observed Band	
Cell Pathway	Cell junction, focal adhesion . Cell membrane; Peripheral membrane protein; Cytoplasmic side . Cell projection, lamellipodium . Cytoplasm, myofibril, sarcomere .
Tissue Specificity	Highly expressed in heart followed by skeletal muscle, pancreas and kidney. Weakly expressed in placenta, lung and liver.
Function	catalytic activity:ATP + a protein = ADP + a phosphoprotein.,domain:A PH-like domain is involved in phosphatidylinositol phosphate binding.,enzyme regulation:Stimulated rapidly but transiently by both cell fibronectin interactions, as well as by insulin, in a PI3-K-dependent manner, likely via the binding of PtdIns(3,4,5)P3 with a PH-like domain of ILK.,function:Receptor-proximal protein kinase regulating integrin-mediated signal transduction. May act as a mediator of inside-out integrin signaling. Focal adhesion protein part of the complex ILK-PINCH. This complex is considered to be one of the convergence points of integrin- and growth factor-signaling pathway. Could be implicated in mediating

Nanjing BYabscience technology Co.,Ltd



cell architecture, adhesion to integrin substrates and anchorage-dependent growth in epithelial cells. Phosphorylates beta-1 and beta-3 integrin subunit on serine and threonine residues, but also

Background

This gene encodes a protein with a kinase-like domain and four ankyrin-like repeats. The encoded protein associates at the cell membrane with the cytoplasmic domain of beta integrins, where it regulates integrin-mediated signal transduction. Activity of this protein is important in the epithelial to mesenchymal transition, and over-expression of this gene is implicated in tumor growth and metastasis. Alternative splicing results in multiple transcript variants. [provided by RefSeq, Jun 2013],

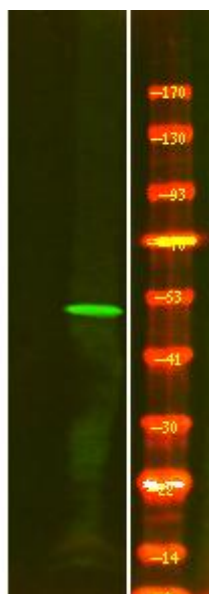
matters needing attention

Avoid repeated freezing and thawing!

Usage suggestions

This product can be used in immunological reaction related experiments. For more information, please consult technical personnel.

Products Images



Western Blot analysis of various cells using ILK-1 (Phospho-Ser343) mouse mAb