



GβL mouse mAb

Catalog No	BYmab-10319
Isotype	IgG
Reactivity	Human; Mouse;Rat
Applications	IHC;WB
Gene Name	MLST8 GBL LST8
Protein Name	GβL
Immunogen	Synthesized peptide derived from human GβL AA range: 44-94
Specificity	This antibody detects endogenous levels of GβL at Human, Mouse,Rat
Formulation	Liquid in PBS containing 50% glycerol, 0.5% BSA and 0.87% sodium azide.
Source	Monoclonal, mouse,IgG
Purification	The antibody was affinity-purified from mouse serum by affinity-chromatography using specific immunogen.
Dilution	IHC-p1:50-200 ,WB 1:1000-2000
Concentration	1 mg/ml
Purity	≥90%
Storage Stability	-20°C/1 year
Synonyms	Target of rapamycin complex subunit LST8 (TORC subunit LST8) (G protein beta subunit-like) (Gable) (Protein GbetaL) (Mammalian lethal with SEC13 protein 8) (mLST8)
Observed Band	37kD
Cell Pathway	Cytoplasm .
Tissue Specificity	Broadly expressed, with highest levels in skeletal muscle, heart and kidney.
Function	function:Unessential component of the TORC1 complex and essential component of the TORC2 complex. TORC1 controls cell growth in response to environmental signals, and is inactivated by nutrient limitation and environmental stress. Within TORC1, LST8 interacts directly with FRAP1 and enhances its kinase activity. In nutrient-poor conditions, stabilizes the FRAP1-RAPTOR interaction and favors RAPTOR-mediated inhibition of FRAP1 activity. TORC2 controls polarity of the actin cytoskeleton via the RAC1 pathway. TORC2 mediates phosphorylation of Akt/PKB on 'Ser-473' and phosphorylation of PKCalpha on 'Ser-657'. ,similarity:Belongs to the WD repeat LST8 family. ,similarity:Contains 7 WD repeats. ,subunit:Interacts with FRAP1, RAPTOR and RHEB. Part of the

Nanjing BYmabscience technology Co.,Ltd



target of rapamycin complex 1 (TORC1) which contains LST8, FRAP1, RAPTOR and AKT1S1. TORC1 binds to and is inhibited by FKBP12-rapamycin. Part of

Background

Unessential component of the TORC1 complex and essential component of the TORC2 complex. TORC1 controls cell growth in response to environmental signals, and is inactivated by nutrient limitation and environmental stress. Within TORC1, LST8 interacts directly with FRAP1 and enhances its kinase activity.

matters needing attention

Avoid repeated freezing and thawing!

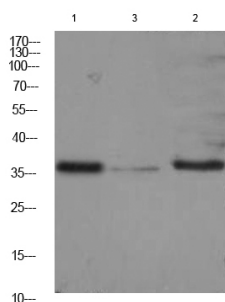
Usage suggestions

This product can be used in immunological reaction related experiments. For more information, please consult technical personnel.

Products Images

Immunohistochemical analysis of paraffin-embedded Human Brain Tissue using GβL mouse Monoclonal antibody diluted at 1:100.

Western blot analysis of 1) Hela Cell Lysate, 2) Rat Kidney Tissue Lysate, 3) 3T3 Cell Lysate using GβL mouse mAb diluted at 1:1000.



Nanjing BYmabscience technology Co.,Ltd

网址: www.njbybio.com

官方热线: 025-5229-8998

监督电话: 15950492658