



PAPD1 mouse mAb

Catalog No	BYmab-09074
Isotype	IgG
Reactivity	Human; Mouse
Applications	WB
Gene Name	MTPAP PAPD1
Protein Name	PAPD1
Immunogen	Synthesized peptide derived from human PAPD1 AA range: 445-495
Specificity	This antibody detects endogenous levels of PAPD1 at Human/Mouse
Formulation	Liquid in PBS containing 50% glycerol, 0.5% BSA and 0.02% sodium azide.
Source	Monoclonal, Mouse,IgG
Purification	The antibody was affinity-purified from mouse antiserum by affinity-chromatography using epitope-specific immunogen.
Dilution	WB 1:500-2000
Concentration	1 mg/ml
Purity	≥90%
Storage Stability	-20°C/1 year
Synonyms	
Observed Band	
Cell Pathway	Cytoplasm . Mitochondrion .
Tissue Specificity	Ubiquitous, with stronger expression in tissues with high energy requirements: heart, brain, and skeletal muscle.
Function	catalytic activity:ATP + RNA(n) = diphosphate + RNA(n+1).,function:Polymerase that creates the 3' poly(A) tail of mitochondrial transcripts. Might be responsible for the creation of some UAA stop codons which are not encoded in mtDNA.,similarity:Belongs to the DNA polymerase type-B-like family.,tissue specificity:Ubiquitous, with stronger expression in tissues with high energy requirements: heart, brain, and skeletal muscle.,
Background	The protein encoded by this gene is a member of the DNA polymerase type-B-like family. This enzyme synthesizes the 3' poly(A) tail of mitochondrial transcripts and plays a role in replication-dependent histone mRNA degradation.[provided by RefSeq, Jan 2011],

Nanjing BYabscience technology Co.,Ltd



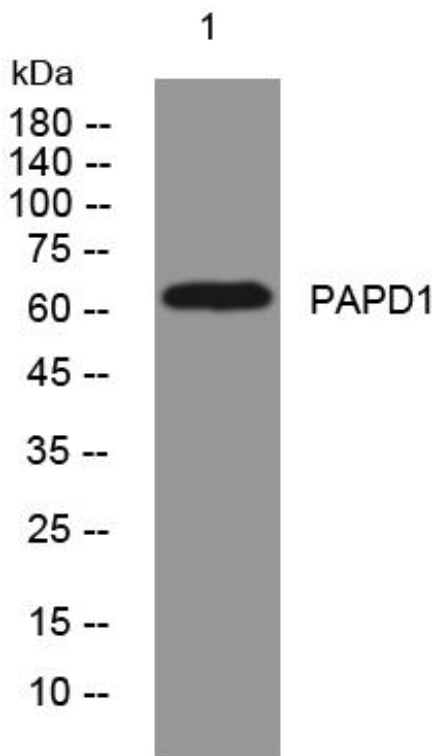
matters needing attention

Avoid repeated freezing and thawing!

Usage suggestions

This product can be used in immunological reaction related experiments. For more information, please consult technical personnel.

Products Images



Western Blot analysis of various cells using PAPD1 mouse mAb