



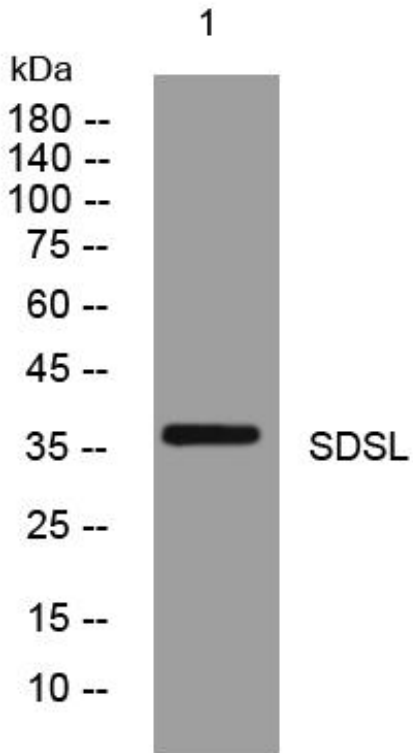
# SDSL mouse mAb

Catalog No	BYmab-08996
Isotype	IgG
Reactivity	Human; Mouse
Applications	WB
Gene Name	SDSL
Protein Name	SDSL
Immunogen	Synthesized peptide derived from human SDSL AA range: 250-300
Specificity	This antibody detects endogenous levels of SDSL at Human/Mouse
Formulation	Liquid in PBS containing 50% glycerol, 0.5% BSA and 0.02% sodium azide.
Source	Monoclonal, Mouse,IgG
Purification	The antibody was affinity-purified from mouse antiserum by affinity-chromatography using epitope-specific immunogen.
Dilution	WB 1:500-2000
Concentration	1 mg/ml
Purity	≥90%
Storage Stability	-20°C/1 year
Synonyms	
Observed Band	
Cell Pathway	cytoplasm,mitochondrion,extracellular exosome,
Tissue Specificity	
Function	cofactor:Pyridoxal phosphate.,similarity:Belongs to the serine/threonine dehydratase family.,
Background	
matters needing attention	Avoid repeated freezing and thawing!
Usage suggestions	This product can be used in immunological reaction related experiments. For more information, please consult technical personnel.

Nanjing BYabscience technology Co.,Ltd



## Products Images



Western Blot analysis of various cells using SDSL mouse mAb