



STK19 mouse mAb

Catalog No	BYmab-08993
Isotype	IgG
Reactivity	Human; Mouse
Applications	WB
Gene Name	STK19 G11 RP1
Protein Name	STK19
Immunogen	Synthesized peptide derived from human STK19 AA range: 89-139
Specificity	This antibody detects endogenous levels of STK19 at Human/Mouse
Formulation	Liquid in PBS containing 50% glycerol, 0.5% BSA and 0.02% sodium azide.
Source	Monoclonal, Mouse,IgG
Purification	The antibody was affinity-purified from mouse antiserum by affinity-chromatography using epitope-specific immunogen.
Dilution	WB 1:500-2000
Concentration	1 mg/ml
Purity	≥90%
Storage Stability	-20°C/1 year
Synonyms	
Observed Band	
Cell Pathway	Nucleus .
Tissue Specificity	Monocytes, hepatocytes, epithelial cells, T- and B-lymphocytes.
Function	catalytic activity:ATP + a protein = ADP + a phosphoprotein.,cofactor:Divalent cations. Has a preference for manganese.,function:Seems to be a protein kinase. In vitro it can phosphorylate casein-alpha on serine and threonine residues and histones on serine residues.,similarity:Belongs to the STK19 family.,subunit:The N-terminus interacts with BAG1.,tissue specificity:Monocytes, hepatocytes, epithelial cells, T-and B-lymphocytes.,
Background	This gene encodes a serine/threonine kinase which localizes predominantly to the nucleus. Its specific function is unknown; it is possible that phosphorylation of this protein is involved in transcriptional regulation. This gene localizes to the major histocompatibility complex (MHC) class III region on chromosome 6 and expresses two transcript variants. [provided by RefSeq, Jul 2008],

Nanjing BYabscience technology Co.,Ltd



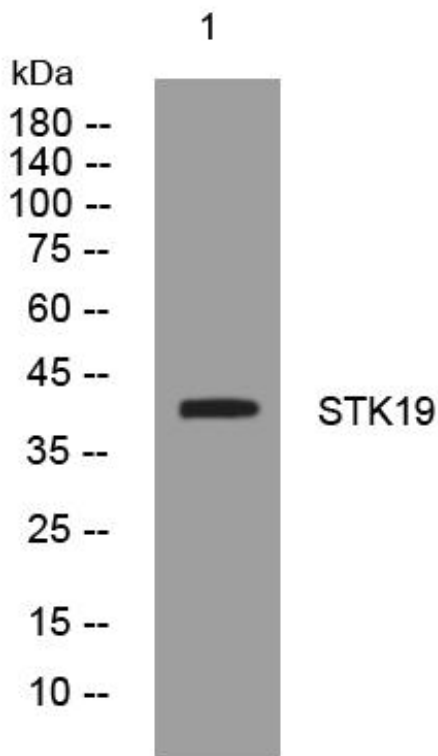
matters needing attention

Avoid repeated freezing and thawing!

Usage suggestions

This product can be used in immunological reaction related experiments. For more information, please consult technical personnel.

Products Images



Western Blot analysis of various cells using STK19 mouse mAb

Nanjing BYabscience technology Co.,Ltd

网址: www.njbybio.com

官方热线: 025-5229-8998

监督电话: 15950492658