



# RHBL3 mouse mAb

Catalog No	BYmab-08967
Isotype	IgG
Reactivity	Human; Mouse
Applications	WB
Gene Name	RHBDL3 RHBDL4 VRHO
Protein Name	RHBL3
Immunogen	Synthesized peptide derived from human RHBL3 AA range: 31-81
Specificity	This antibody detects endogenous levels of RHBL3 at Human/Mouse
Formulation	Liquid in PBS containing 50% glycerol, 0.5% BSA and 0.02% sodium azide.
Source	Monoclonal, Mouse,IgG
Purification	The antibody was affinity-purified from mouse antiserum by affinity-chromatography using epitope-specific immunogen.
Dilution	WB 1:500-2000
Concentration	1 mg/ml
Purity	≥90%
Storage Stability	-20°C/1 year
Synonyms	
Observed Band	
Cell Pathway	Membrane ; Multi-pass membrane protein .
Tissue Specificity	
Function	catalytic activity:Cleaves type-1 transmembrane domains using a catalytic dyad composed of serine and histidine that are contributed by different transmembrane domains.,function:May be involved in regulated intramembrane proteolysis and the subsequent release of functional polypeptides from their membrane anchors.,similarity:Belongs to the peptidase S54 family.,similarity:Contains 2 EF-hand domains.,
Background	
matters needing attention	Avoid repeated freezing and thawing!

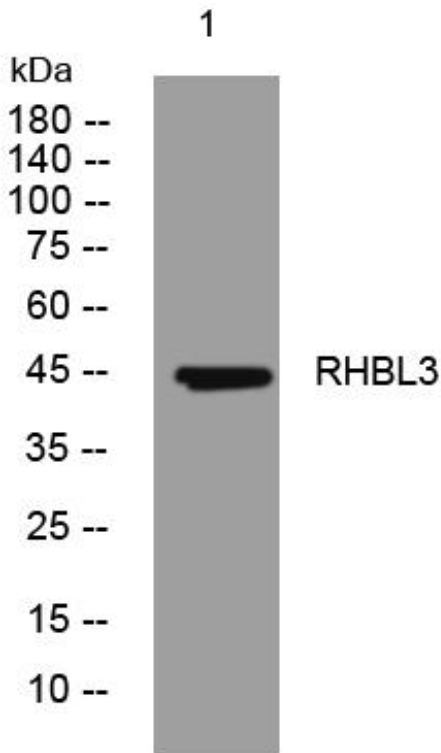
Nanjing BYabscience technology Co.,Ltd



### Usage suggestions

This product can be used in immunological reaction related experiments. For more information, please consult technical personnel.

## Products Images



Western Blot analysis of various cells using RHBL3 mouse mAb

Nanjing BYabs science technology Co.,Ltd

网址: [www.njbybio.com](http://www.njbybio.com)

官方热线: 025-5229-8998

监督电话: 15950492658