



K1107 mouse mAb

Catalog No	BYmab-08912
Isotype	IgG
Reactivity	Human; Mouse
Applications	WB
Gene Name	KIAA1107
Protein Name	K1107
Immunogen	Synthesized peptide derived from human K1107 AA range: 234-284
Specificity	This antibody detects endogenous levels of K1107 at Human/Mouse
Formulation	Liquid in PBS containing 50% glycerol, 0.5% BSA and 0.02% sodium azide.
Source	Monoclonal, Mouse,IgG
Purification	The antibody was affinity-purified from mouse antiserum by affinity-chromatography using epitope-specific immunogen.
Dilution	WB 1:500-2000
Concentration	1 mg/ml
Purity	≥90%
Storage Stability	-20°C/1 year
Synonyms	
Observed Band	
Cell Pathway	Cell projection, axon . Cell junction, synapse, presynapse . Cytoplasmic vesicle, clathrin-coated vesicle . In primary cultures, mainly present at axonal and presynaptic terminal levels of mature neurons. In immature neurons, localizes to the cell body and growing processes, including axons. .
Tissue Specificity	
Function	PTM:Phosphorylated upon DNA damage, probably by ATM or ATR.,
Background	
matters needing attention	Avoid repeated freezing and thawing!

Nanjing BYabscience technology Co.,Ltd

网址: www.njbybio.com

官方热线: 025-5229-8998

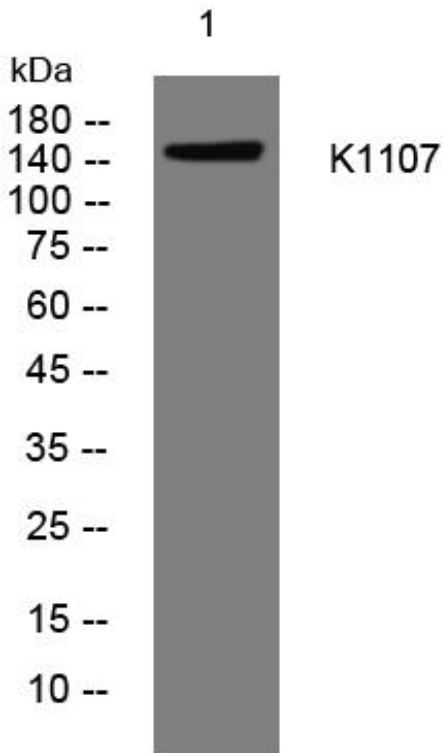
监督电话: 15950492658



Usage suggestions

This product can be used in immunological reaction related experiments. For more information, please consult technical personnel.

Products Images



Western Blot analysis of various cells using K1107 mouse mAb

Nanjing BYabs science technology Co.,Ltd

网址: www.njbybio.com

官方热线: 025-5229-8998

监督电话: 15950492658