



CPNE4 mouse mAb

Catalog No	BYmab-08876
Isotype	IgG
Reactivity	Human; Mouse
Applications	WB
Gene Name	CPNE4
Protein Name	CPNE4
Immunogen	Synthesized peptide derived from human CPNE4 AA range: 476-526
Specificity	This antibody detects endogenous levels of CPNE4 at Human/Mouse
Formulation	Liquid in PBS containing 50% glycerol, 0.5% BSA and 0.02% sodium azide.
Source	Monoclonal, Mouse,IgG
Purification	The antibody was affinity-purified from mouse antiserum by affinity-chromatography using epitope-specific immunogen.
Dilution	WB 1:500-2000
Concentration	1 mg/ml
Purity	≥90%
Storage Stability	-20°C/1 year
Synonyms	
Observed Band	
Cell Pathway	extracellular exosome,
Tissue Specificity	Widely expressed (PubMed:12670487, PubMed:12949241). Expressed strongly in the brain, heart and prostate (PubMed:12670487, PubMed:12949241). Expressed strongly in peripheral blood leukocytes (PubMed:12949241).
Function	function:May function in membrane trafficking. Exhibits calcium-dependent phospholipid binding properties.,similarity:Belongs to the copine family.,similarity:Contains 1 VWFA domain.,similarity:Contains 2 C2 domains.,
Background	This gene belongs to the highly conserved copine family. It encodes a calcium-dependent, phospholipid-binding protein, which may be involved in membrane trafficking, mitogenesis and development. Alternative splicing results in multiple transcript variants. [provided by RefSeq, Jan 2014],
matters needing attention	Avoid repeated freezing and thawing!

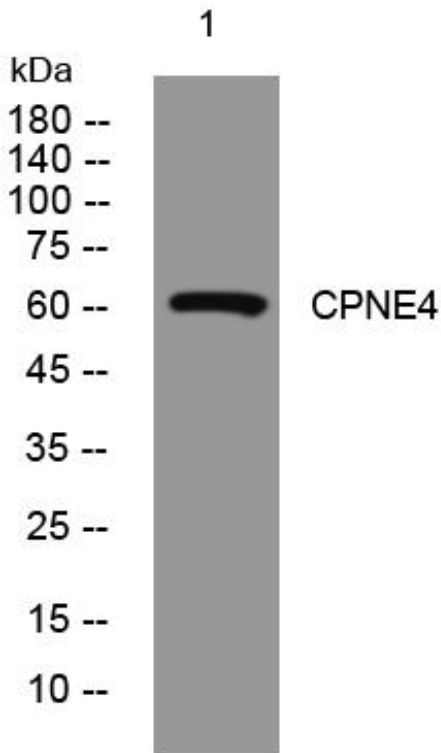
Nanjing BYabscience technology Co.,Ltd



Usage suggestions

This product can be used in immunological reaction related experiments. For more information, please consult technical personnel.

Products Images



Western Blot analysis of various cells using CPNE4 mouse mAb

Nanjing BYabs science technology Co.,Ltd

网址: www.njbybio.com

官方热线: 025-5229-8998

监督电话: 15950492658