



USE1 mouse mAb

Catalog No	BYmab-08834
Isotype	IgG
Reactivity	Human; Mouse
Applications	WB
Gene Name	USE1 USE1L MDS032
Protein Name	USE1
Immunogen	Synthesized peptide derived from human USE1 AA range: 47-97
Specificity	This antibody detects endogenous levels of USE1 at Human/Mouse
Formulation	Liquid in PBS containing 50% glycerol, 0.5% BSA and 0.02% sodium azide.
Source	Monoclonal, Mouse,IgG
Purification	The antibody was affinity-purified from mouse antiserum by affinity-chromatography using epitope-specific immunogen.
Dilution	WB 1:500-2000
Concentration	1 mg/ml
Purity	≥90%
Storage Stability	-20°C/1 year
Synonyms	
Observed Band	
Cell Pathway	Endoplasmic reticulum membrane ; Single-pass type IV membrane protein .
Tissue Specificity	
Function	function:SNARE that may be involved in targeting and fusion of Golgi-derived retrograde transport vesicles with the ER.,similarity:Belongs to the USE1 family.,subunit:Component of a SNARE complex consisting of STX18, USE1L, BNIP1/SEC20L and SEC22B. Interacts directly with STX18.,
Background	
matters needing attention	Avoid repeated freezing and thawing!

Nanjing BYabscience technology Co.,Ltd

网址: www.njbybio.com

官方热线: 025-5229-8998

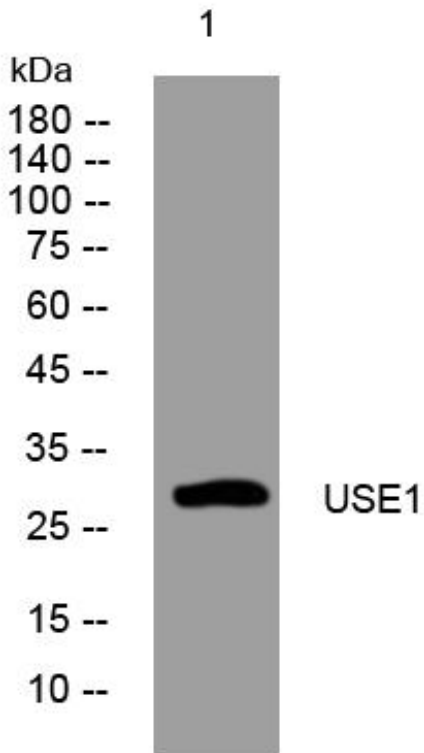
监督电话: 15950492658



Usage suggestions

This product can be used in immunological reaction related experiments. For more information, please consult technical personnel.

Products Images



Western Blot analysis of various cells using USE1 mouse mAb

Nanjing BYabscience technology Co.,Ltd

网址: www.njbybio.com

官方热线: 025-5229-8998

监督电话: 15950492658