



SSRB mouse mAb

Catalog No	BYmab-08771
Isotype	IgG
Reactivity	Human; Mouse
Applications	WB
Gene Name	SSR2 TRAPB HSD25
Protein Name	SSRB
Immunogen	Synthesized peptide derived from human SSRB AA range: 107-157
Specificity	This antibody detects endogenous levels of SSRB at Human/Mouse
Formulation	Liquid in PBS containing 50% glycerol, 0.5% BSA and 0.02% sodium azide.
Source	Monoclonal, Mouse,IgG
Purification	The antibody was affinity-purified from mouse antiserum by affinity-chromatography using epitope-specific immunogen.
Dilution	WB 1:500-2000
Concentration	1 mg/ml
Purity	≥90%
Storage Stability	-20°C/1 year
Synonyms	
Observed Band	
Cell Pathway	Endoplasmic reticulum membrane; Single-pass type I membrane protein.
Tissue Specificity	
Function	function:TRAP proteins are part of a complex whose function is to bind calcium to the ER membrane and thereby regulate the retention of ER resident proteins.,similarity:Belongs to the TRAP-beta family.,subunit:Heterotetramer of TRAP-alpha, TRAP-beta, TRAP-delta and TRAP-gamma. Interacts with TMEM173/STING.,
Background	The signal sequence receptor (SSR) is a glycosylated endoplasmic reticulum (ER) membrane receptor associated with protein translocation across the ER membrane. The SSR consists of 2 subunits, a 34-kD glycoprotein (alpha-SSR or SSR1) and a 22-kD glycoprotein (beta-SSR or SSR2). The human beta-signal sequence receptor gene (SSR2) maps to chromosome bands 1q21-q23. [provided by RefSeq, Jul 2008],

Nanjing BYabscience technology Co.,Ltd



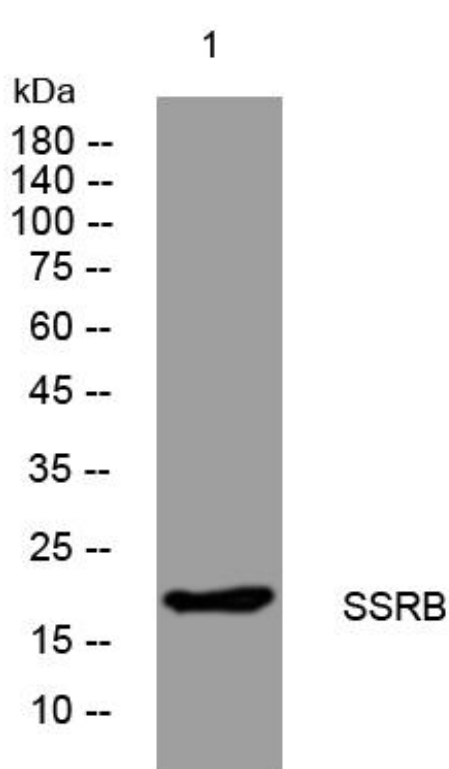
matters needing attention

Avoid repeated freezing and thawing!

Usage suggestions

This product can be used in immunological reaction related experiments. For more information, please consult technical personnel.

Products Images



Western Blot analysis of various cells using SSRB mouse mAb