



CAP1 mouse mAb

Catalog No	BYmab-08756
Isotype	IgG
Reactivity	Human; Mouse;Rat
Applications	WB
Gene Name	CAP1 CAP
Protein Name	CAP1
Immunogen	Synthesized peptide derived from human CAP1 AA range: 71-121
Specificity	This antibody detects endogenous levels of CAP1 at Human/Mouse/Rat
Formulation	Liquid in PBS containing 50% glycerol, 0.5% BSA and 0.02% sodium azide.
Source	Monoclonal, Mouse,IgG
Purification	The antibody was affinity-purified from mouse antiserum by affinity-chromatography using epitope-specific immunogen.
Dilution	WB 1:500-2000
Concentration	1 mg/ml
Purity	≥90%
Storage Stability	-20°C/1 year
Synonyms	
Observed Band	
Cell Pathway	Cell membrane ; Peripheral membrane protein .
Tissue Specificity	
Function	function:Directly regulates filament dynamics and has been implicated in a number of complex developmental and morphological processes, including mRNA localization and the establishment of cell polarity.,similarity:Belongs to the CAP family.,similarity:Contains 1 C-CAP/cofactor C-like domain.,subunit:Homodimer. Binds actin monomers.,
Background	The protein encoded by this gene is related to the S. cerevisiae CAP protein, which is involved in the cyclic AMP pathway. The human protein is able to interact with other molecules of the same protein, as well as with CAP2 and actin. Alternatively spliced transcript variants encoding different isoforms have been identified. [provided by RefSeq, Aug 2016],

Nanjing BYabscience technology Co.,Ltd



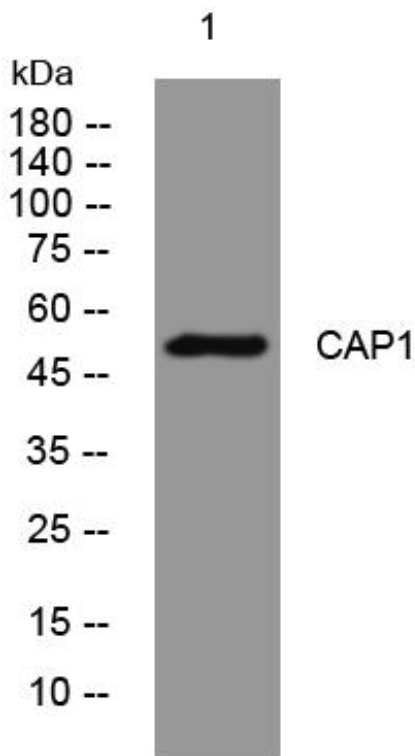
matters needing attention

Avoid repeated freezing and thawing!

Usage suggestions

This product can be used in immunological reaction related experiments. For more information, please consult technical personnel.

Products Images



Western Blot analysis of various cells using CAP1 mouse mAb