



# PSMD5 mouse mAb

<b>Catalog No</b>	BYmab-08745
<b>Isotype</b>	IgG
<b>Reactivity</b>	Human; Mouse
<b>Applications</b>	WB
<b>Gene Name</b>	PSMD5 KIAA0072
<b>Protein Name</b>	PSMD5
<b>Immunogen</b>	Synthesized peptide derived from human PSMD5 AA range: 424-474
<b>Specificity</b>	This antibody detects endogenous levels of PSMD5 at Human/Mouse
<b>Formulation</b>	Liquid in PBS containing 50% glycerol, 0.5% BSA and 0.02% sodium azide.
<b>Source</b>	Monoclonal, Mouse,IgG
<b>Purification</b>	The antibody was affinity-purified from mouse antiserum by affinity-chromatography using epitope-specific immunogen.
<b>Dilution</b>	WB 1:500-2000
<b>Concentration</b>	1 mg/ml
<b>Purity</b>	≥90%
<b>Storage Stability</b>	-20°C/1 year
<b>Synonyms</b>	
<b>Observed Band</b>	
<b>Cell Pathway</b>	proteasome complex,nucleoplasm,cytosol,proteasome regulatory particle, base subcomplex,proteasome accessory complex,
<b>Tissue Specificity</b>	
<b>Function</b>	domain:Rich in dileucine repeats, which have been implicated in trafficking of a variety of transmembrane proteins.,function:Belongs to the 26S multisubunit protease, which is required for ubiquitin-dependent proteolysis. Does not bind ubiquitin polymers.,similarity:Belongs to the proteasome subunit S5B family.,subunit:26S protease is composed of a multicatalytic protease (proteasome) and a regulatory ATPase complex. Both are multisubunit structures that associate in the presence of ATP to form the protease. Subunit S5B is part of the regulatory complex.,
<b>Background</b>	The 26S proteasome is a multicatalytic proteinase complex with a highly ordered structure composed of 2 complexes, a 20S core and a 19S regulator. The 20S core is composed of 4 rings of 28 non-identical subunits; 2 rings are composed of

**Nanjing BYabscience technology Co.,Ltd**



7 alpha subunits and 2 rings are composed of 7 beta subunits. The 19S regulator is composed of a base, which contains 6 ATPase subunits and 2 non-ATPase subunits, and a lid, which contains up to 10 non-ATPase subunits. Proteasomes are distributed throughout eukaryotic cells at a high concentration and cleave peptides in an ATP/ubiquitin-dependent process in a non-lysosomal pathway. This gene encodes a non-ATPase subunit of the 19S regulator base that functions as a chaperone protein during 26S proteasome assembly. [provided by RefSeq, Jul 2012],

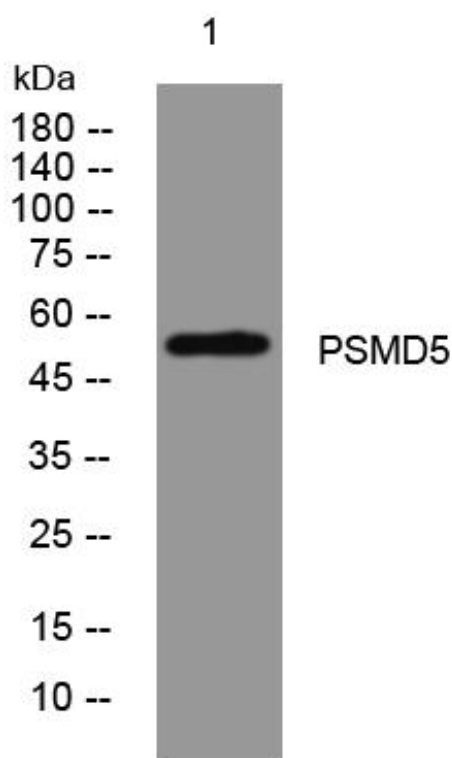
**matters needing attention**

Avoid repeated freezing and thawing!

**Usage suggestions**

This product can be used in immunological reaction related experiments. For more information, please consult technical personnel.

## Products Images



Western Blot analysis of various cells using PSMD5 mouse mAb

Nanjing BYabs science technology Co.,Ltd

网址: [www.njbybio.com](http://www.njbybio.com)

官方热线: 025-5229-8998

监督电话: 15950492658