



# MA2B2 mouse mAb

<b>Catalog No</b>	BYmab-08652
<b>Isotype</b>	IgG
<b>Reactivity</b>	Human; Mouse
<b>Applications</b>	WB
<b>Gene Name</b>	MAN2B2 KIAA0935
<b>Protein Name</b>	MA2B2
<b>Immunogen</b>	Synthesized peptide derived from human MA2B2 AA range: 906-956
<b>Specificity</b>	This antibody detects endogenous levels of MA2B2 at Human/Mouse
<b>Formulation</b>	Liquid in PBS containing 50% glycerol, 0.5% BSA and 0.02% sodium azide.
<b>Source</b>	Monoclonal, Mouse,IgG
<b>Purification</b>	The antibody was affinity-purified from mouse antiserum by affinity-chromatography using epitope-specific immunogen.
<b>Dilution</b>	WB 1:500-2000
<b>Concentration</b>	1 mg/ml
<b>Purity</b>	≥90%
<b>Storage Stability</b>	-20°C/1 year
<b>Synonyms</b>	
<b>Observed Band</b>	
<b>Cell Pathway</b>	Secreted .
<b>Tissue Specificity</b>	
<b>Function</b>	catalytic activity:Hydrolysis of terminal, non-reducing alpha-D-mannose residues in alpha-D-mannosides.,cofactor:Binds 1 zinc ion per subunit.,similarity:Belongs to the glycosyl hydrolase 38 family.,
<b>Background</b>	
<b>matters needing attention</b>	Avoid repeated freezing and thawing!

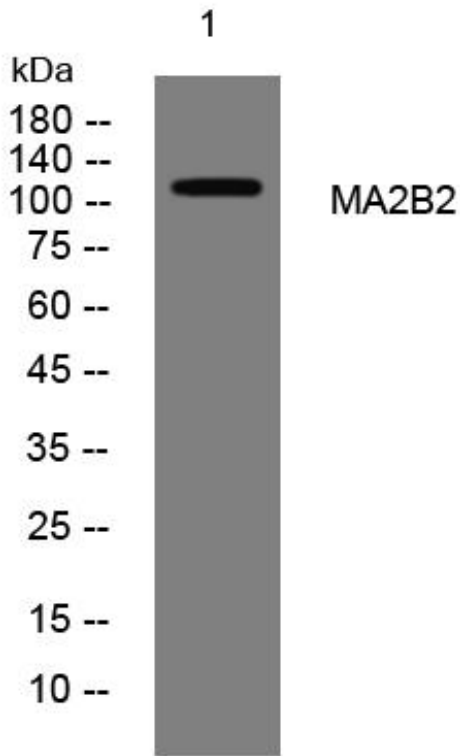
Nanjing BYabscience technology Co.,Ltd



**Usage suggestions**

This product can be used in immunological reaction related experiments. For more information, please consult technical personnel.

**Products Images**



Western Blot analysis of various cells using MA2B2 mouse mAb