



ZG16 mouse mAb

Catalog No	BYmab-08601
Isotype	IgG
Reactivity	Human; Mouse;Rat
Applications	WB
Gene Name	ZG16
Protein Name	ZG16
Immunogen	Synthesized peptide derived from human ZG16 AA range: 59-109
Specificity	This antibody detects endogenous levels of ZG16 at Human/Mouse/Rat
Formulation	Liquid in PBS containing 50% glycerol, 0.5% BSA and 0.02% sodium azide.
Source	Monoclonal, Mouse,IgG
Purification	The antibody was affinity-purified from mouse antiserum by affinity-chromatography using epitope-specific immunogen.
Dilution	WB 1:500-2000
Concentration	1 mg/ml
Purity	≥90%
Storage Stability	-20°C/1 year
Synonyms	
Observed Band	
Cell Pathway	Secreted, extracellular space, extracellular matrix . Zymogen granule lumen . Golgi apparatus lumen .
Tissue Specificity	Highly expressed in liver. Detected at lower levels in colon, ileum and jejunum.
Function	function:May act as a linker molecule between the submembranous matrix on the luminal side of zymogen granule membrane (ZGM) and aggregated secretory proteins during granule formation in the TGN.,similarity:Belongs to the jacalin lectin family.,subcellular location:Stored in zymogen granules.,
Background	
matters needing attention	Avoid repeated freezing and thawing!

Nanjing BYabscience technology Co.,Ltd

网址: www.njbybio.com

官方热线: 025-5229-8998

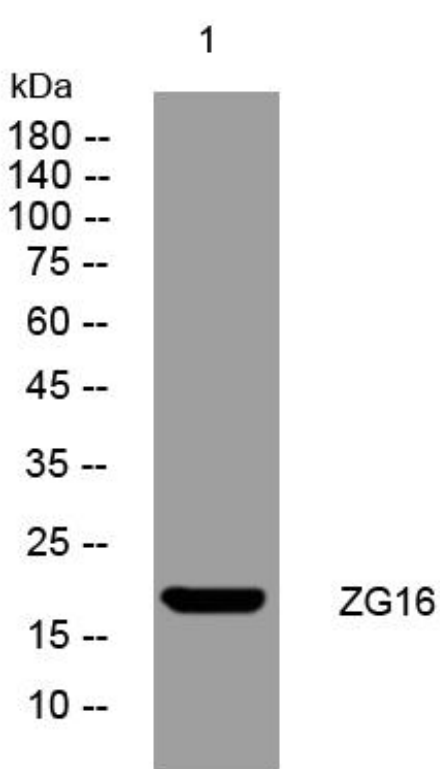
监督电话: 15950492658



Usage suggestions

This product can be used in immunological reaction related experiments. For more information, please consult technical personnel.

Products Images



Western Blot analysis of various cells using ZG16 mouse mAb

Nanjing BYabs science technology Co.,Ltd

网址: www.njbybio.com

官方热线: 025-5229-8998

监督电话: 15950492658