



SG11A mouse mAb

Catalog No	BYmab-08591
Isotype	IgG
Reactivity	Human;Rat;Mouse;
Applications	WB
Gene Name	SPAG11A EP2 HE2
Protein Name	SG11A
Immunogen	Synthesized peptide derived from human SG11A AA range: 56-106
Specificity	This antibody detects endogenous levels of SG11A at Human
Formulation	Liquid in PBS containing 50% glycerol, 0.5% BSA and 0.02% sodium azide.
Source	Monoclonal, Mouse,IgG
Purification	The antibody was affinity-purified from mouse antiserum by affinity-chromatography using epitope-specific immunogen.
Dilution	WB 1:500-2000
Concentration	1 mg/ml
Purity	≥90%
Storage Stability	-20°C/1 year
Synonyms	
Observed Band	
Cell Pathway	Secreted .
Tissue Specificity	
Function	polymorphism:The microheterogeneity probably represents an allelic variant.,sequence caution:Translated as Glu.,similarity:Belongs to the SPAG11 family.,tissue specificity:Specifically expressed in caput and proximal corpus of epididymis. Present in the epididymal epithelium and on the sperm surface, with a subacrosomal equatorial distribution on the sperm head.,
Background	This gene encodes several androgen-dependent, epididymis-specific secretory proteins. The specific functions of these proteins have not been determined, but they are thought to be involved in sperm maturation. Some of the isoforms contain regions of similarity to beta-defensins, a family of antimicrobial peptides. The gene is located on chromosome 8p23 near the defensin gene cluster. Alternative splicing of this gene results in seven transcript variants encoding different

Nanjing BYabscience technology Co.,Ltd



isoforms. Two different N-terminal and five different C-terminal protein sequences are encoded by the splice variants. Two additional variants have been described, but their full length sequences have not been determined. [provided by RefSeq, Jul 2008],

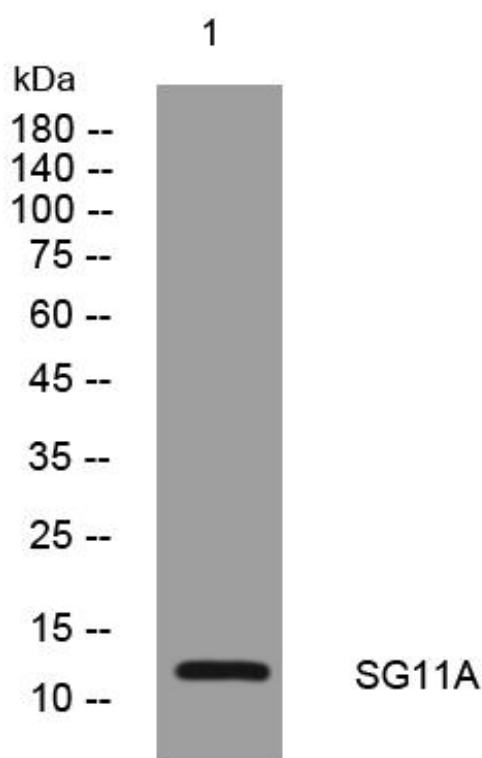
matters needing attention

Avoid repeated freezing and thawing!

Usage suggestions

This product can be used in immunological reaction related experiments. For more information, please consult technical personnel.

Products Images



Western Blot analysis of various cells using SG11A mouse mAb