



# EXOC6 mouse mAb

<b>Catalog No</b>	BYmab-08587
<b>Isotype</b>	IgG
<b>Reactivity</b>	Human; Mouse;Rat
<b>Applications</b>	WB
<b>Gene Name</b>	EXOC6 SEC15A SEC15L SEC15L1
<b>Protein Name</b>	EXOC6
<b>Immunogen</b>	Synthesized peptide derived from human EXOC6 AA range: 610-660
<b>Specificity</b>	This antibody detects endogenous levels of EXOC6 at Human/Mouse/Rat
<b>Formulation</b>	Liquid in PBS containing 50% glycerol, 0.5% BSA and 0.02% sodium azide.
<b>Source</b>	Monoclonal, Mouse,IgG
<b>Purification</b>	The antibody was affinity-purified from mouse antiserum by affinity-chromatography using epitope-specific immunogen.
<b>Dilution</b>	WB 1:500-2000
<b>Concentration</b>	1 mg/ml
<b>Purity</b>	≥90%
<b>Storage Stability</b>	-20°C/1 year
<b>Synonyms</b>	
<b>Observed Band</b>	
<b>Cell Pathway</b>	Cytoplasm . Cytoplasm, perinuclear region . Cell projection, growth cone . Midbody, Midbody ring . Perinuclear in undifferentiated cells. Redistributes to growing neurites and growth cones during neuronal differentiation. Colocalizes with CNTRL/centriolin at the midbody ring (PubMed:16213214). .
<b>Tissue Specificity</b>	
<b>Function</b>	function:Component of the exocyst complex involved in the docking of exocyst vesicles with fusion sites on the plasma membrane.,similarity:Belongs to the SEC15 family.,subunit:The exocyst complex is composed of EXOC1, EXOC2, EXOC3, EXOC4, EXOC5, EXOC6, EXOC7 and EXOC8. Interacts with CEP110.,
<b>Background</b>	The protein encoded by this gene is highly similar to the Saccharomyces cerevisiae SEC15 gene product, which is essential for vesicular traffic from the Golgi apparatus to the cell surface in yeast. It is one of the components of a multiprotein complex required for exocytosis. The 5' portion of this gene and two neighboring cytochrome p450 genes are included in a deletion that

**Nanjing BYabscience technology Co.,Ltd**



results in an autosomal-dominant form of nonsyndromic optic nerve aplasia (ONA). Alternative splicing and the use of alternative promoters results in multiple transcript variants. A paralogous gene encoding a similar protein is present on chromosome 2. [provided by RefSeq, Jan 2016],

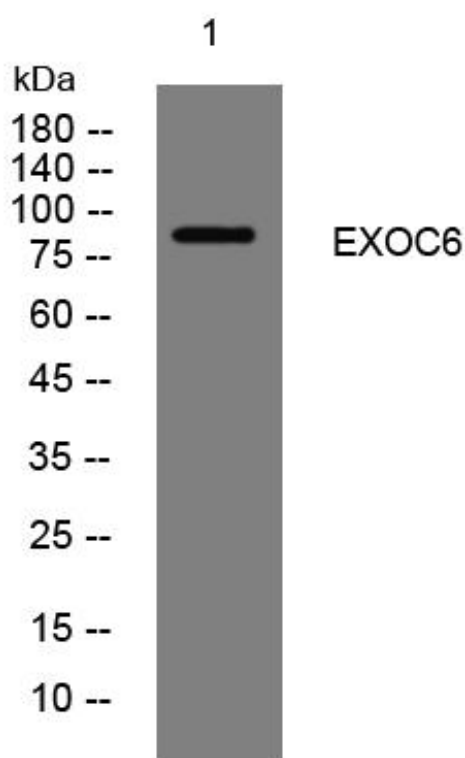
**matters needing attention**

Avoid repeated freezing and thawing!

**Usage suggestions**

This product can be used in immunological reaction related experiments. For more information, please consult technical personnel.

## Products Images



Western Blot analysis of various cells using EXOC6 mouse mAb