



ENOPH mouse mAb

Catalog No	BYmab-08563
Isotype	IgG
Reactivity	Human; Mouse; Rat
Applications	WB
Gene Name	ENOPH1 MASA MSTP145
Protein Name	ENOPH
Immunogen	Synthesized peptide derived from human ENOPH AA range: 112-162
Specificity	This antibody detects endogenous levels of ENOPH at Human/Mouse/Rat
Formulation	Liquid in PBS containing 50% glycerol, 0.5% BSA and 0.02% sodium azide.
Source	Monoclonal, Mouse, IgG
Purification	The antibody was affinity-purified from mouse antiserum by affinity-chromatography using epitope-specific immunogen.
Dilution	WB 1:500-2000
Concentration	1 mg/ml
Purity	≥90%
Storage Stability	-20°C/1 year
Synonyms	
Observed Band	
Cell Pathway	Cytoplasm . Nucleus .
Tissue Specificity	
Function	catalytic activity:5-(methylthio)-2,3-dioxopentyl phosphate + H(2)O = 1,2-dihydroxy-5-(methylthio)pent-1-en-3-one + phosphate., cofactor: Binds 1 magnesium ion per subunit., function: Bifunctional enzyme that enolizes the substrate to form the intermediate 2-hydroxy-5-(methylthio)-3-oxopent-1-enyl phosphate, which is then dephosphorylated to form the acireductone 1,2-dihydroxy-5-(methylthio)pent-1-en-3-one., pathway: Amino-acid biosynthesis; L-methionine biosynthesis via salvage pathway; L-methionine from (S)-methyl-5-thio-alpha-D-ribose 1-phosphate: step 3/6., pathway: Amino-acid biosynthesis; L-methionine biosynthesis via salvage pathway; L-methionine from (S)-methyl-5-thio-alpha-D-ribose 1-phosphate: step 4/6., similarity: Belongs to the HAD-like hydrolase superfamily. MasA/mtnC family., subunit: Monomer.,

Nanjing BYabscience technology Co., Ltd



Background

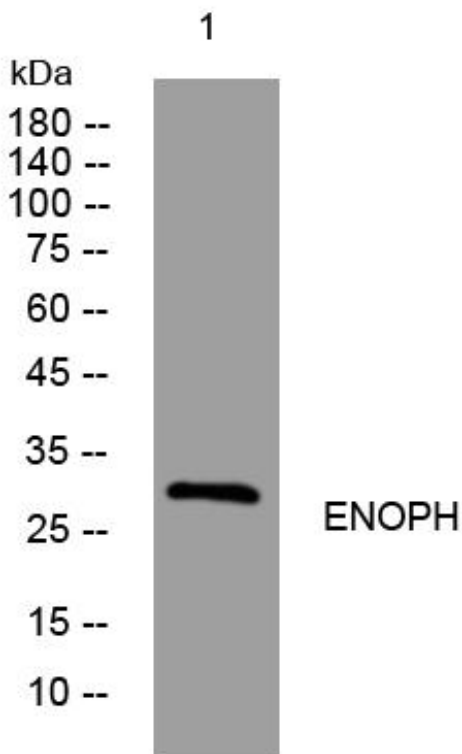
matters needing attention

Avoid repeated freezing and thawing!

Usage suggestions

This product can be used in immunological reaction related experiments. For more information, please consult technical personnel.

Products Images



Western Blot analysis of various cells using ENOPH mouse mAb

Nanjing BYabscience technology Co.,Ltd

网址: www.njbybio.com

官方热线: 025-5229-8998

监督电话: 15950492658