



# RISC mouse mAb

Catalog No	BYmab-08550
Isotype	IgG
Reactivity	Human; Mouse;Rat
Applications	WB
Gene Name	SCPEP1 RISC SCP1 MSTP034 UNQ265/PRO302
Protein Name	RISC
Immunogen	Synthesized peptide derived from human RISC AA range: 151-201
Specificity	This antibody detects endogenous levels of RISC at Human/Mouse/Rat
Formulation	Liquid in PBS containing 50% glycerol, 0.5% BSA and 0.02% sodium azide.
Source	Monoclonal, Mouse,IgG
Purification	The antibody was affinity-purified from mouse antiserum by affinity-chromatography using epitope-specific immunogen.
Dilution	WB 1:500-2000
Concentration	1 mg/ml
Purity	≥90%
Storage Stability	-20°C/1 year
Synonyms	
Observed Band	
Cell Pathway	Secreted .
Tissue Specificity	
Function	function:May be involved in vascular wall and kidney homeostasis.,similarity:Belongs to the peptidase S10 family.,
Background	
matters needing attention	Avoid repeated freezing and thawing!
Usage suggestions	This product can be used in immunological reaction related experiments. For more information, please consult technical personnel.

Nanjing BYabscience technology Co.,Ltd

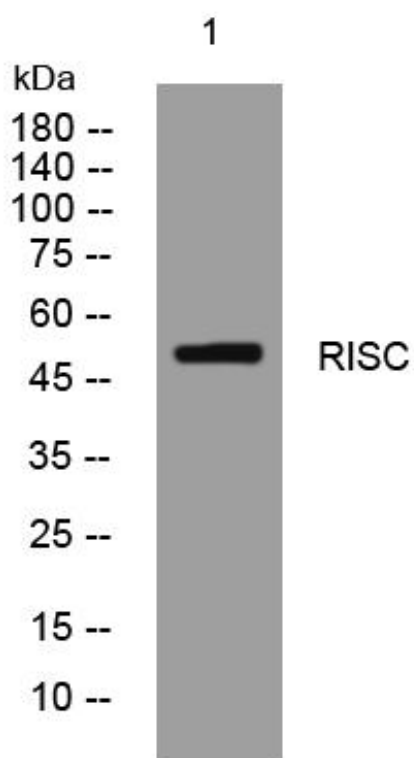
网址: [www.njbybio.com](http://www.njbybio.com)

官方热线: 025-5229-8998

监督电话: 15950492658



## Products Images



Western Blot analysis of various cells using RISC mouse mAb